

QuakeReady

Adelaide Eastern Region Earthquake Handbook

INTRODUCTION and GENERAL OVERVIEW

EASTERN REGION EMERGENCY RISK MANAGEMENT GROUP

Councils working with communities to reduce the impact of flood, fire and earthquake.

The Group is comprised of:

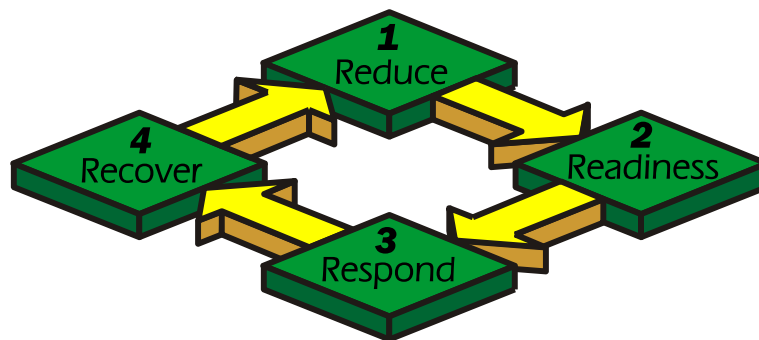
- City of Burnside
- Campbelltown City Council
- City of Norwood Payneham St Peters
- City of Prospect
- Town of Walkerville

For specific information about earthquake issues in your area please contact your local Council.

THE PURPOSE OF THIS HANDBOOK

Earthquakes that cause loss of life and damage to property are rare but are much more common in Australia than most people realise. There are thousands of earthquakes worldwide each year with most going undetected and only a few causing significant property damage and loss of life. This handbook prepares you for the unlikely event of an earthquake that might put you, your family and your property at risk. Government does have an important part to play, however residents and businesses can lessen the effect that earthquakes have on their families and properties, while also assisting the wider community to respond to, and recover from an earthquake.

QuakeReady is designed to assist you in preparing for responding and recovering from an earthquake. Many of the actions suggested are low-cost and easy to implement.



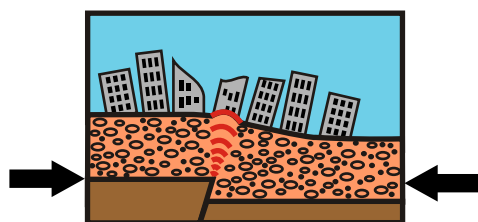
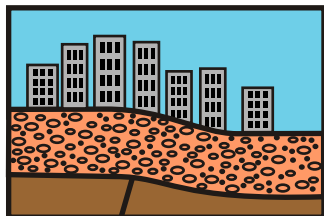
Be QuakeReady

HOW TO USE THIS HANDBOOK:

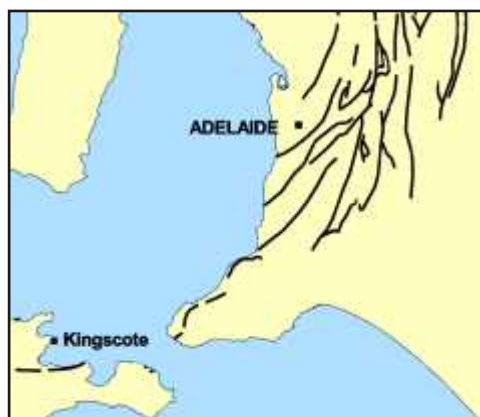
The significant impact that earthquakes can have on families and the community is internationally recognised. Following this introduction there are four sections that relate to reduction, readiness, response and recovery. (See the diagram above.) A summary of important points is provided at the end of each step.

At the end of the handbook there is a comprehensive set of checklists for you to use.

INTRODUCTION and GENERAL OVERVIEW



Fault Line



Major fault lines in the Adelaide Hills

ABOUT EARTHQUAKES

The earth's outer surface is broken into pieces called tectonic plates. These plates are constantly and slowly moving under stress. When these stresses are released causing pressure faults and movement, an earthquake occurs. You do not have to be directly over a fault line to be affected by an earthquake.

Small events occur frequently - in fact, most earthquakes cause little or no damage and go undetected. A strong earthquake can be followed by a series of aftershocks weeks after the event.

An earthquake and the aftershocks that follow can cause buildings and trees to fall, roads to be blocked, water mains, sewer and gas pipes to break, chemical and petrol tanks to crack, telephone and power lines to break. This can result in buildings, bridges and roads being unsafe to use, tap water being contaminated, sewage, gas, chemical and petrol leaks and fallen live electrical wires being on the ground.

In extreme cases,

- Dams could fail, causing flash flooding.
- Seismic sea waves (Tsunamis) may occur which in South Australia have been assessed to be 1 metre or less in height.
- Landslide
- Rockfalls

To assist with surviving and recovering from an earthquake your household can develop a QuakeReady Household Kit.

FOR EMERGENCY ASSISTANCE:

For emergency assistance during an earthquake event call the **State Emergency Service** on **132 500**

COUNCIL CONTACTS:

City of Burnside:
401 Greenhill Road,
Tusmore SA 5065

PO Box 9
Glenside SA 5065

08 8366 4200 (all hours)
burnside@burnside.sa.gov.au

Campbelltown City Council:
172 Montacute Road,
Rostrevor SA 5073

PO Box 1
Campbelltown SA 5074

08 8366 9222
cityof@campbelltown.sa.gov.au

City of Norwood Payneham
& St Peters:
175 The Parade,
Norwood SA 5067

PO Box 204
Kent Town SA 5071

08 8366 4555
townhall@npsp.sa.gov.au

City of Prospect:
128 Prospect Road,
Prospect SA 5082

Postal: PO Box 171,
Prospect SA 5082

08 8269 5355
admin@prospect.sa.gov.au

Town of Walkerville:
66 Walkerville Terrace,
Gilberton, SA 5081

Telephone: 08 8344 7711
walkervl@walkerville.sa.gov.au

DISCLAIMER

The information contained in this handbook is intended as a guide only and is subject to change without prior notice. It is not a substitute for expert, technical or legal advice. Council accepts no risk or responsibility for any losses, damage, costs or other consequences whatsoever arising from the use of this information.