

Borthwick Park Creek Improvements

Draft Concept Plan

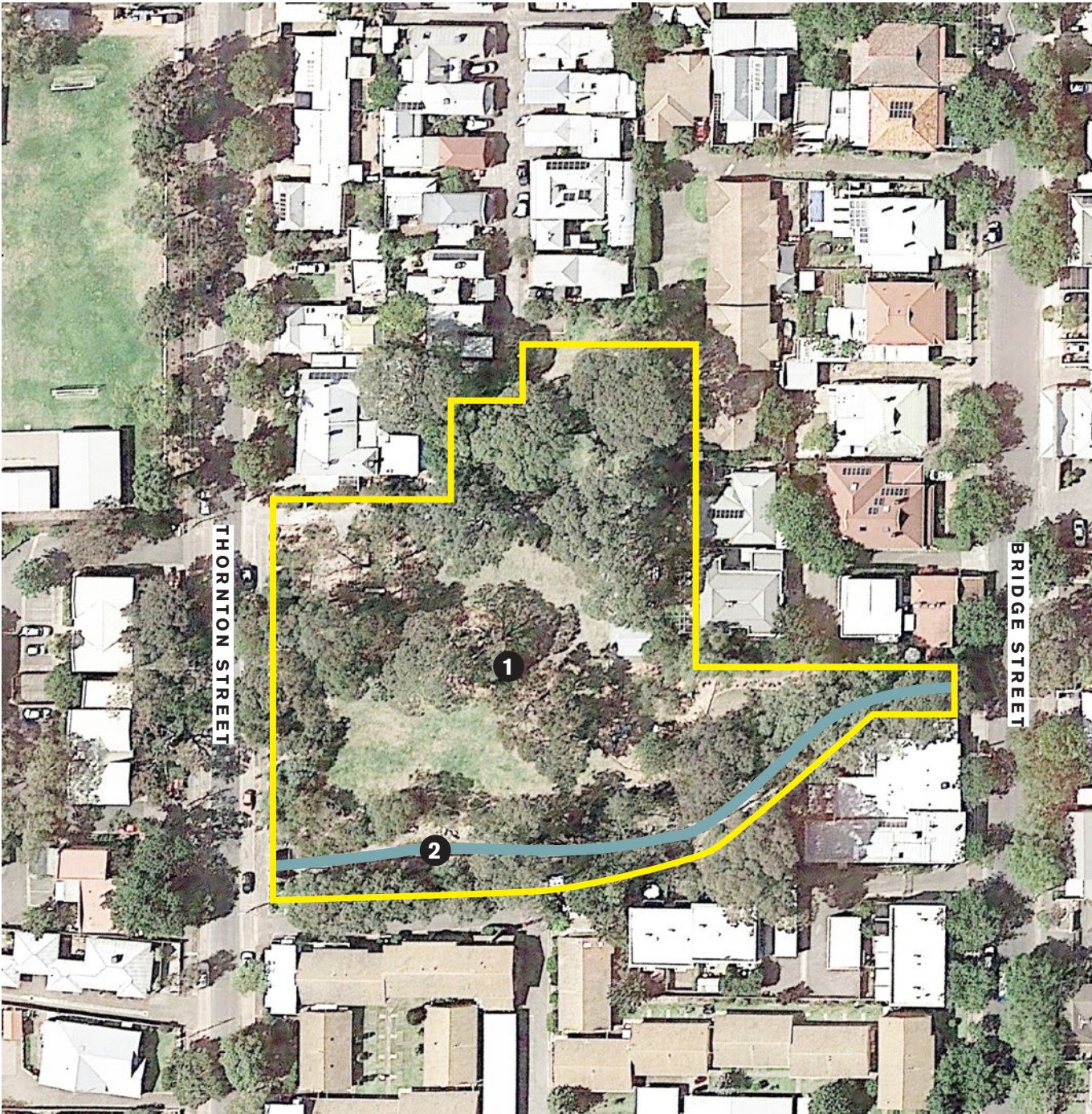
PHASE	CONCEPT PLAN
REF NO.	19.017
CLIENT	CITY OF NPSP
DATE	17.01.2020
ISSUE	FOR CONSULTATION



City of
**Norwood
Payneham
& St Peters**

LANDSKÅP
Urban Design & Landscape Architecture

Site Context



Site

- Borthwick Park is a 7,500 square metre, district level open space with a neighbourhood playground, in the suburb of Kensington.
- Second Creek runs through the park, east to west (Bridge Street to Thornton Street).
- The creek is an open channel through the park, characterised by concrete and stone wall sides.

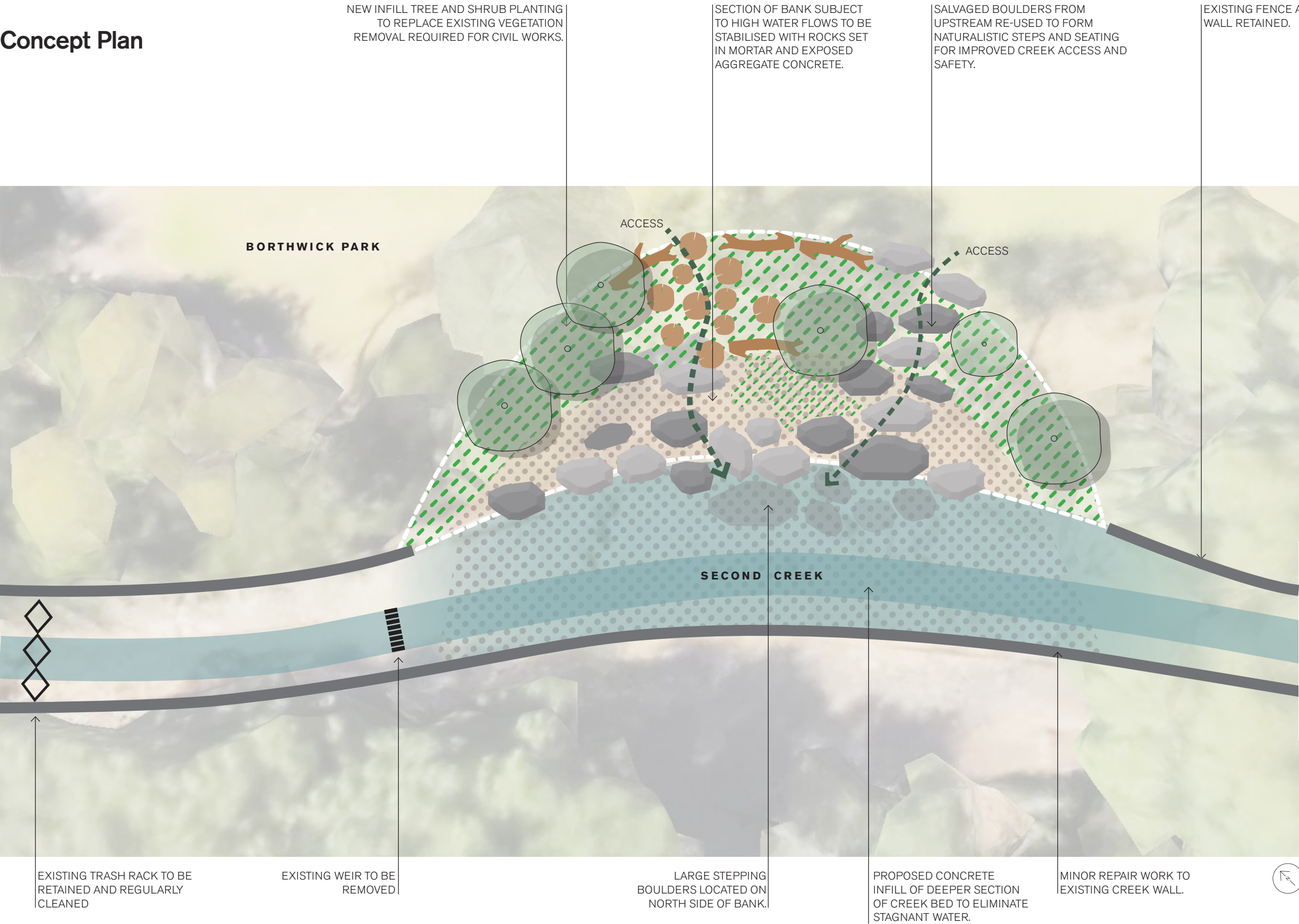
1	Borthwick Park
2	Second Creek

Site Photos - Second Creek



- 1 View looking downstream towards weir and Thornton Street culvert
- 2 View looking upstream showing access on the left
- 3 View of existing creek bank with large rocks
- 4 View of existing creek bank where pedestrians access
- 5 View of upstream channelised flow and boulder for possible re-use

Concept Plan



- Salvaged boulder
- Log stump
- Large tree log
- New tree
- Rocks in mortar
- Concrete infill
- New planting
- Main creek channel

Proposed
Materials



Large natural stone boulders
(re-use existing site boulders where possible)



Natural rocks set in mortar / concrete in
areas of high water flow



Gravel and ballast rock above high water
line

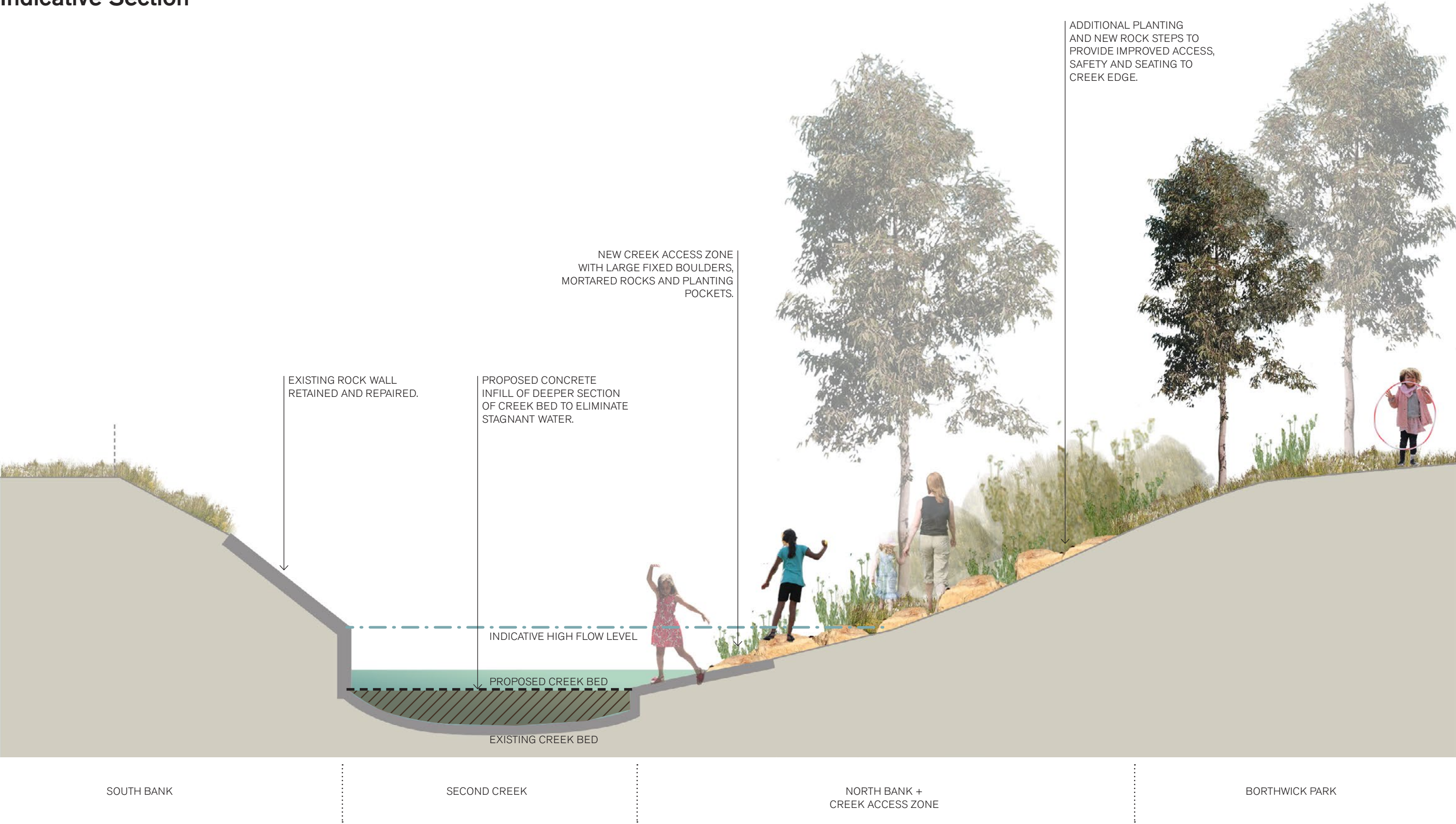


Exposed aggregate concrete paving
Non-slip finish



New planting pockets
Native species

Indicative Section



Concept Illustration

For illustrative purposes only

PROPOSED



EXISTING



1	Existing wall maintained
2	Proposed concrete infill of creek bed
3	New and salvaged rocks / boulders
4	New stepped access to upper bank
5	Existing fence maintained
6	Existing weir removed
7	Stagnant water held back by existing weir