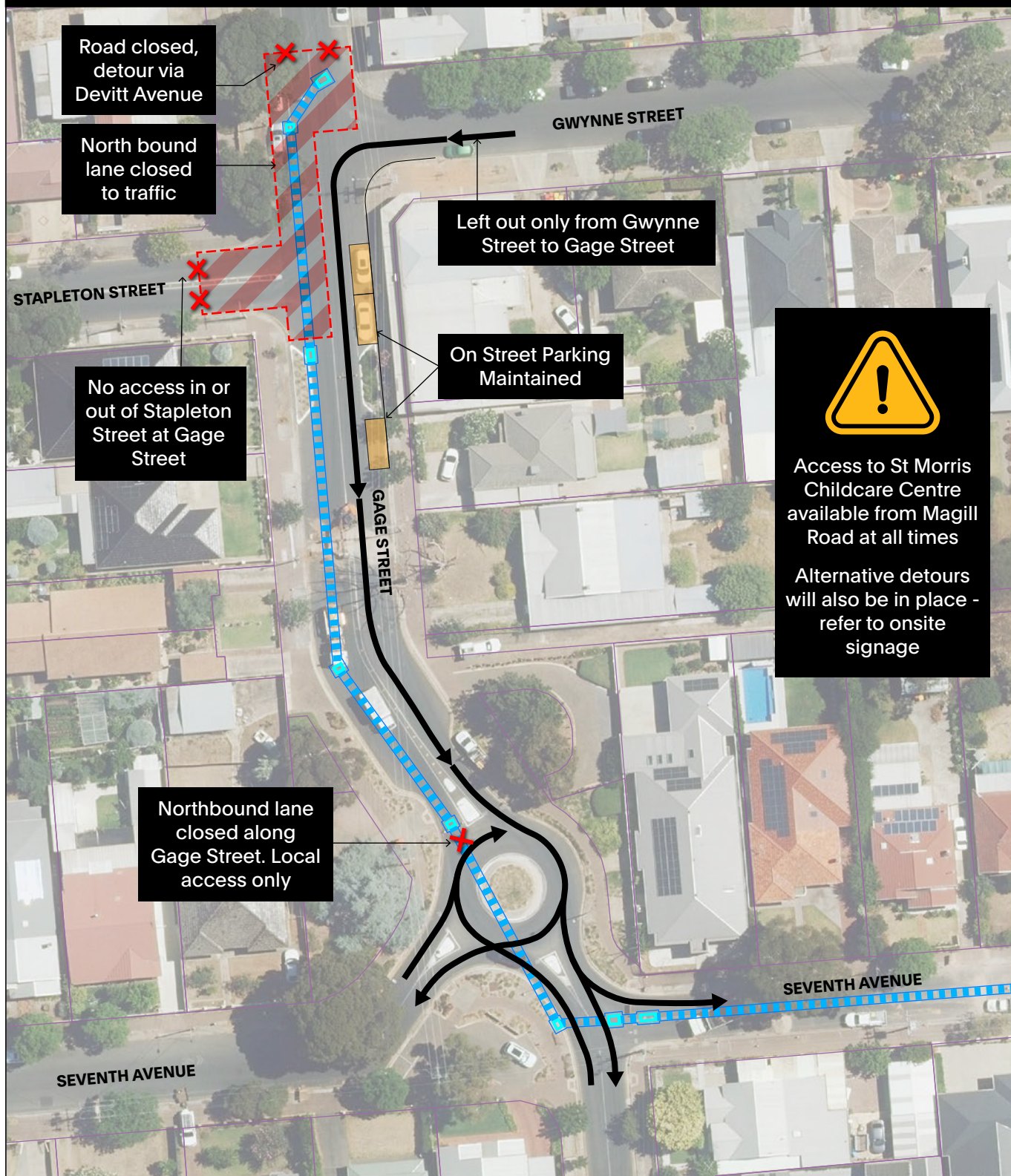


STAGE 1A GAGE ST - GWYNNE ST TO STAPLETON ST (End April -Mid May)



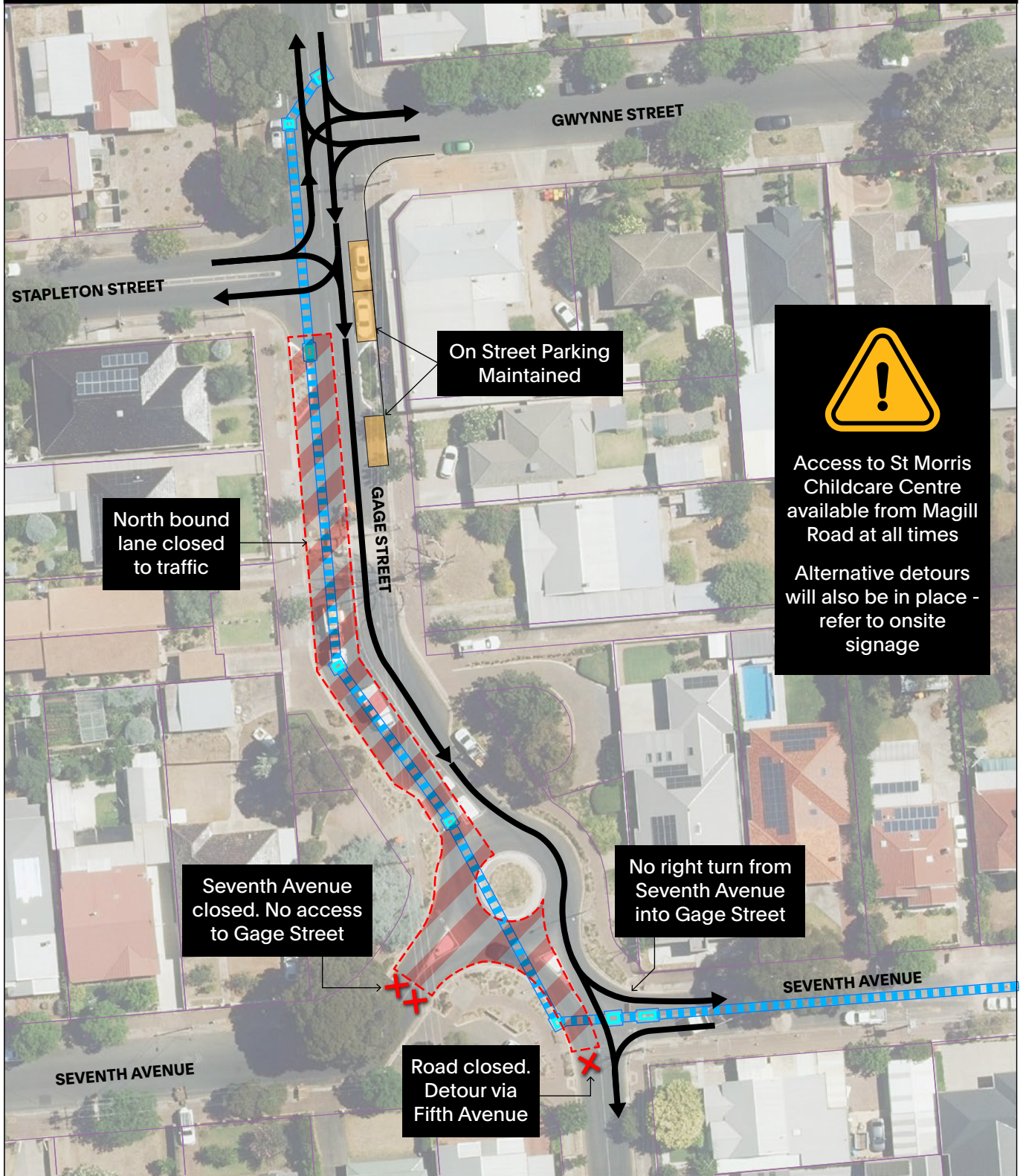
- Stormwater pipe
- Stormwater pit
- Working Area
- Traffic Movements



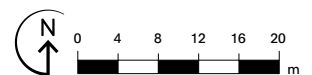
MORE INFO
www.npsp.sa.gov.au



STAGE 1B GAGE ST - STAPLETON ST TO SEVENTH AVE (Mid May - Early June)



- Stormwater pipe
- Working Area
- Stormwater pit
- Traffic Movements

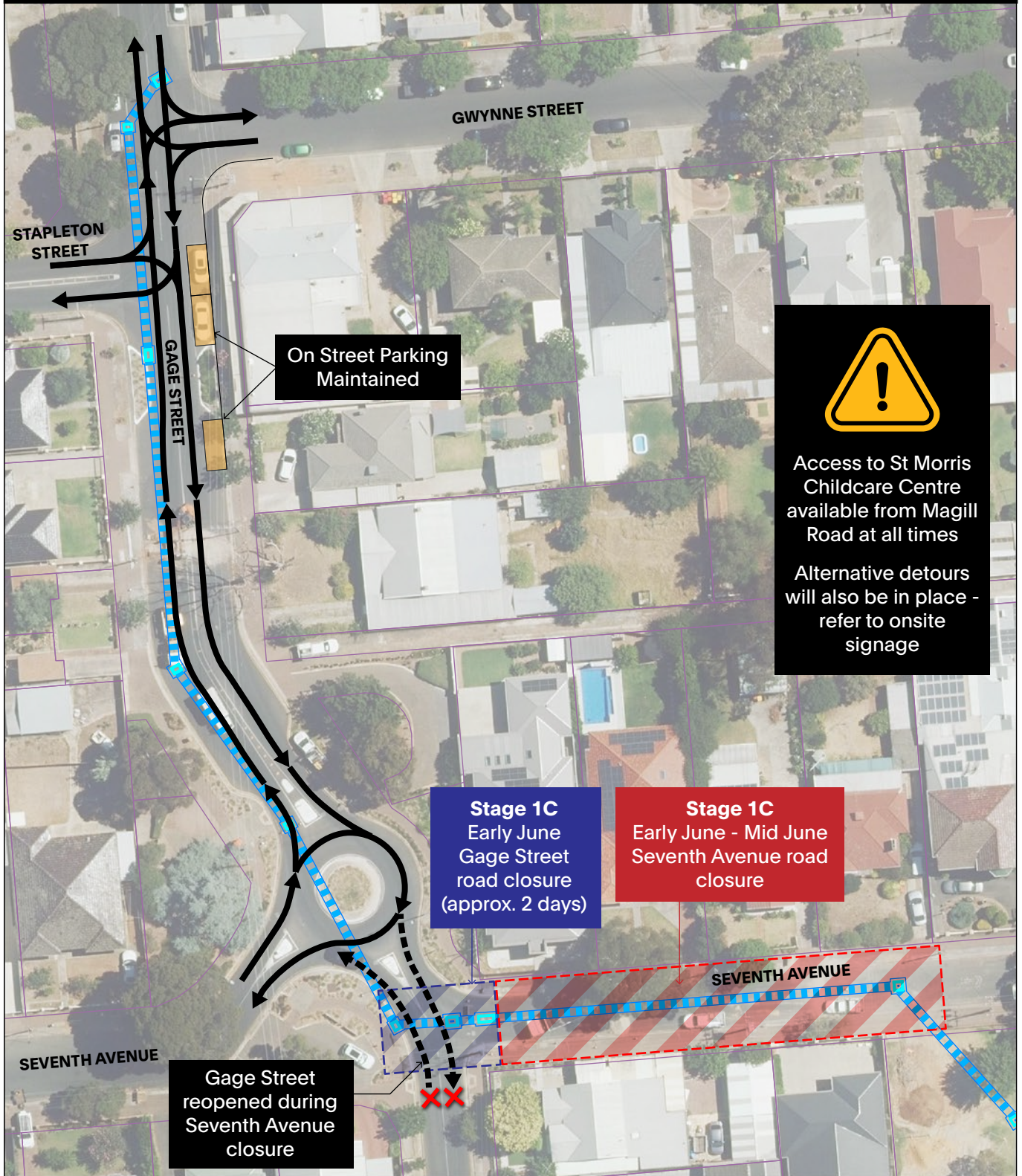


←
MORE INFO
www.npsp.sa.gov.au

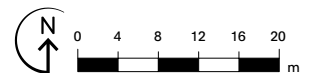


City of
Norwood
Payneham
& St Peters

STAGE 1C GAGE ST - GAGE STREET AND SEVENTH AVE (Early June - Mid June)



- Stormwater pipe
- Stormwater pit
- Working Areas
- Traffic Movements

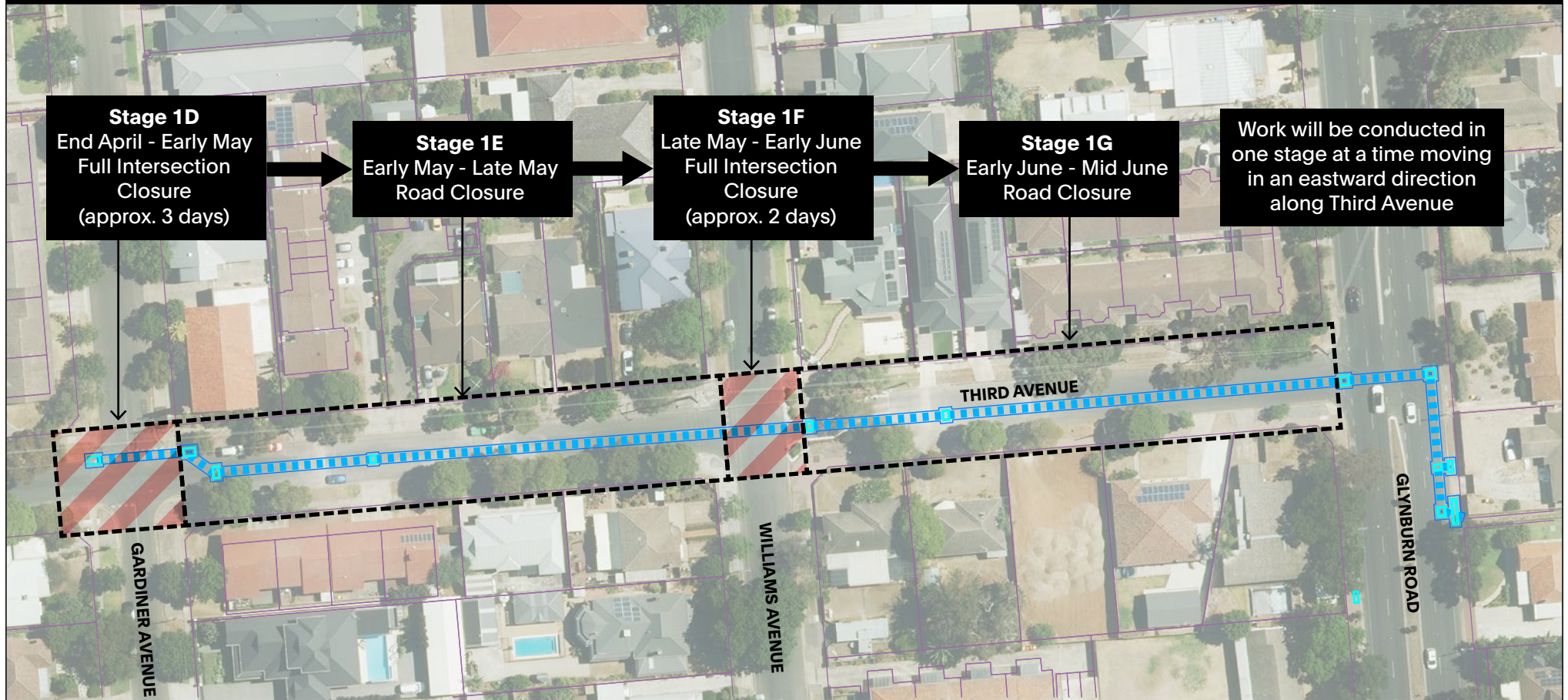


MORE INFO
www.npsp.sa.gov.au

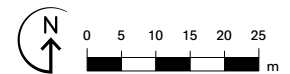


City of
Norwood
Payneham
& St Peters

STAGE 1D-1G THIRD AVENUE - GARDINER AVE TO GLYNBURN RD (End of April - Mid June)



- Stormwater pipe
- Road Closure
- Stormwater pit
- Full Intersection Closure, local detours to be in place



MORE INFO

www.npsp.sa.gov.au



City of
Norwood
Payneham
& St Peters