

FELIXSTOW RESERVE MASTERPLAN REPORT

DECEMBER 2015



City of
Norwood
Payneham
& St Peters



oxygen



FELIXSTOW RESERVE
MASTERPLAN REPORT

PREPARED FOR



City of
Norwood
Payneham
& St Peters

PREPARED BY

oxygen

Landscape Architecture | Urban Design | Urban Planning

Adelaide
98-100 Halifax Street, Adelaide SA 5000

Canberra
1/19 Eastlake Parade, Kingston ACT 2604

Oxygen Pty Ltd
ABN 22 107 472 284
Telephone +61 8 7324 9600
Email agame@oxygen.net.au

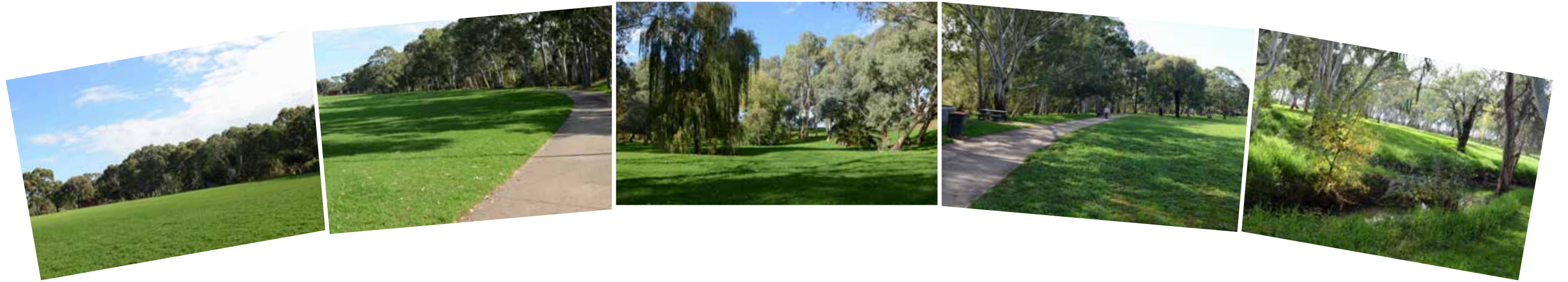
DOCUMENT STATUS

ISSUE	AUTHOR	REVIEW	APPROVED
For Review	A Game	L.Stein	J.Hayter
Revision 2	A Game	J.Hayter	J.Hayter
Revision 3	A Game		
Revision 4	J Bernhardt	A. Game	
Revision 5	A. Game	NPSP	

CONTENTS

INTRODUCTION	05
Project Background	06
Existing Site	08
Site Analysis	10
Consultation Summary	12
Masterplan Vision	14
MASTERPLAN	15
MASTERPLAN LAYERS	
Wetland	16
Cultural Heritage + Interpretation	20
Pathways + Access	22
Materials + Surfaces	23
Structures	24
Furniture	25
Signage & Wayfinding	26
Lighting	27
Recreation + Activity	28
Natural Play	29
Trees	30
Planting	32
Car Parking	33
ILLUSTRATIONS	34
Implementation	38

FELIXSTOW RESERVE



INTRODUCTION

BACKGROUND

Oxigen, Landscape Architects and Urban Designers, have been engaged by the City of Norwood Payneham & St Peters to develop a Masterplan for Felixstow Reserve.

It is proposed that Felixstow Reserve will include a new wetland as part of the Eastern Regional Alliance (ERA) Waterproofing Eastern Adelaide Project being undertaken by three of the participating ERA Councils, namely the Cities of Burnside, Norwood Payneham & St Peters and the Town of Walkerville.

This Masterplan will provide the framework to strategically guide the redevelopment of this significant piece of Regional open space. This includes integrating the proposed wetland into the Reserve as well as providing new and upgraded community recreation facilities.

PROCESS

This Masterplan has been developed in response to the brief issued by the City of Norwood Payneham & St Peters calling for a Masterplan to provide the blueprint for the future management and upgrade of Felixstow Reserve.

The Masterplan was prepared in three stages, as follows:

STAGE 1: Felixstow Reserve Masterplan ‘Aspirations’

This stage included:

- > Analysis of current strategic context
- > Initial discussions with stakeholders - including a community Park Day
- > Spatial arrangements

STAGE 2: Felixstow Reserve Masterplan Concept

Through consultation with the Council and the Community a Concept was developed. The Concept helped to determine the requirements for the Reserve and was used as the basis for developing the Masterplan.

STEP 3: Felixstow Reserve Masterplan

The Masterplan outlines the future development of the Reserve. It expands on the positive qualities and attributes of the Reserve and provides direction for future improvements that will realise the Reserve’s full potential.

The Masterplan (this document) will be finalised following Council and Community consultation.



LOCATION IN RELATION TO OTHER RESERVES



ERA WATERPROOFING PROJECT

PROJECT BACKGROUND

- > A wetland at Felixstow Reserve is part of the Eastern Regional Alliance (ERA) Waterproofing Eastern Adelaide Stormwater Harvesting and Re-Use Project
- > The proposed wetland is estimated to encompass an area of approximately 1.0 hectare with an additional 600 sqm comprising of three 200 sqm bio-filtration beds.
- > The Felixstow Reserve Masterplan provides the framework to strategically guide the redevelopment of this significant piece of Regional open space. This includes integrating the proposed wetland into the Reserve as well as providing new and upgraded community recreation facilities.
- > Oxigen and the City of Norwood Payneham & St Peters (NPSP) have worked closely with the ERA team to ensure that the best outcome for the Community and Council is achieved.



Waterproofing Eastern Adelaide is being delivered by the Eastern Region Alliance (ERA); an alliance of the seven Councils in Metropolitan Adelaide’s eastern suburbs. The following three Councils are directly involved in the planning and delivery of the project:

- > City of Burnside
- > City of Norwood Payneham & St Peters
- > Town of Walkerville

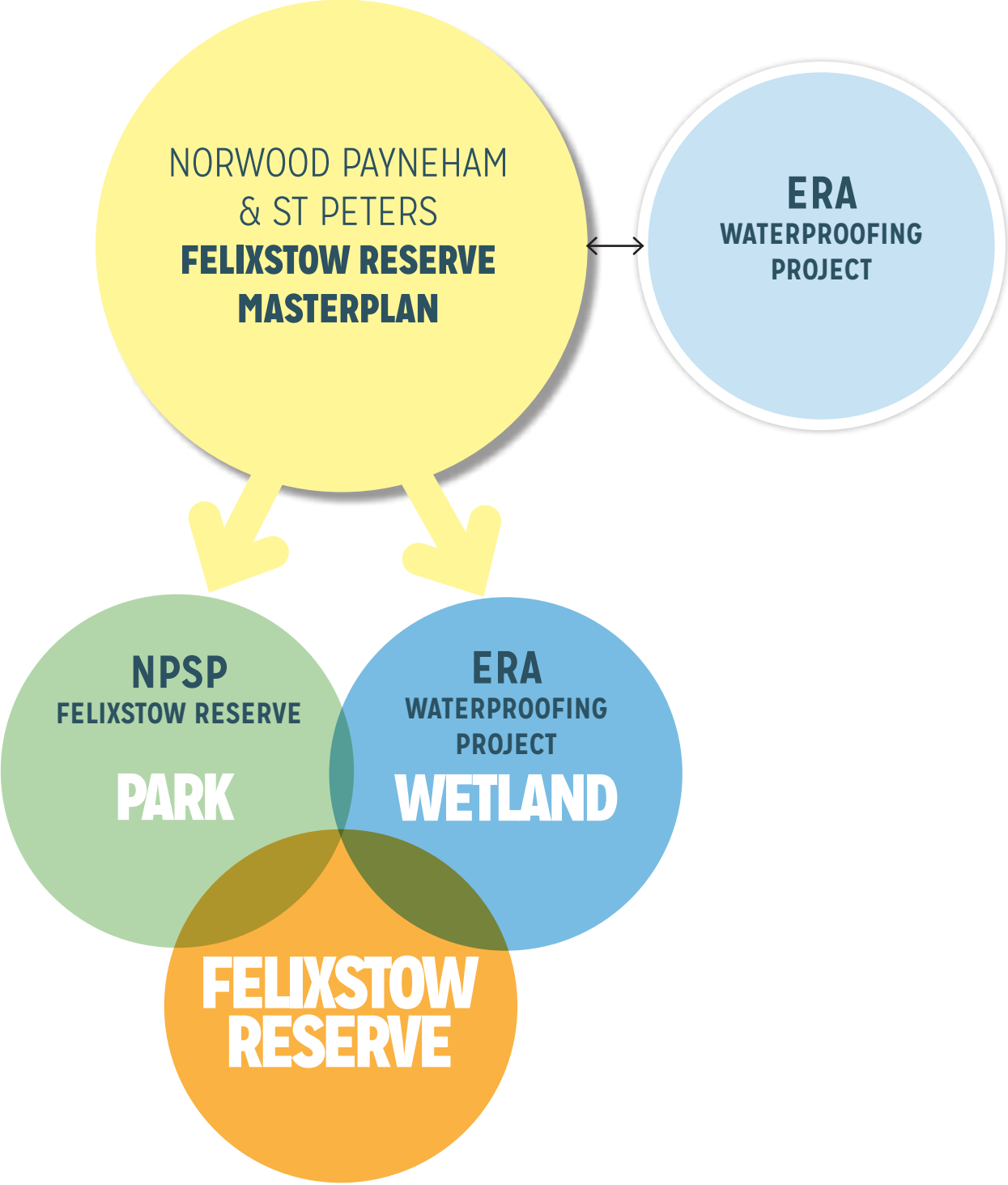
The Waterproofing Eastern Adelaide scheme is supported through funding for the Australian Government’s National Urban Water and Desalination Plan and also the Adelaide and Mount Lofty Ranges Natural Resources Management Board, which assisted the Councils in the initial stages and continues to be an integral contributor to the Project.

These innovative Councils have been working together to plan and now implement Waterproofing Eastern Adelaide, whereby a leading team of Hydrologists, Civil Engineers, Urban Designers and other experts will work together to identify, harvest, store, filter and reuse stormwater in the eastern suburbs.

This Project is expected to reduce operational spending on local Reserve irrigation as well as green our suburbs and enhance the quality of water that is discharged to our gulf.

From ERA website: <http://www.era.sa.gov.au/>

DIAGRAM ILLUSTRATING THE PROJECT FRAMEWORK



CULTURAL HERITAGE SURVEY

PROJECT BACKGROUND

OBJECTIVES

A Cultural Heritage Survey of Felixstow Reserve was undertaken as part of the Masterplanning process.

Australian Cultural Heritage Management was engaged by the City of Norwood Payneham & St Peters to undertake the Survey in collaboration with the Kurna Traditional Owners.

The main objectives of the Cultural Heritage Survey were to:

- › Identify and record any Aboriginal sites or objects, as defined under the Aboriginal Heritage Act 1988, which exist within the Reserve; and,
- › Determine any areas of significance within the Reserve which need to be treated in a particular manner and which could affect the design and location of the proposed upgrade works.

SURVEY OUTCOMES

The Cultural Heritage Survey confirmed that the Adelaide Plains, River Torrens (Karrawirra Parri) and associated waterways was once an area of intense cultural activity by local Kurna people.

Felixstow Reserve is located near and/or within areas which have high cultural significance, both spiritually and functionally, for Kurna people. These areas include the physical status of the River, its banks and environs, native vegetation, associated physical evidence such as archaeological sites, and the historic associations of the area as an important place for pre-colonial habitation, ceremony and hunting. Ethnographically, water sources are significant, as they feature in various creation and ancestor mythologies.

The River Torrens (Karrawirra Parri), meaning red gum forest river in Kurna language, was identified by the Kurna representatives as a culturally significant landform. The importance of the river as a seasonal route between the sea and the Adelaide hills was emphasised, along with the use of seasonal foods along the river.

A Canoe Scar Tree located in the Reserve was also identified by the Kurna representatives as having significant cultural and historical significance, as it is a tangible artefact of past Kurna presence and activities in the area.



CANOE SCAR TREE, FELIXSTOW RESERVE

EXISTING
SITE LAYOUT



EXISTING KEY FEATURES



TOILET BLOCK

The existing brick toilet block has been identified for removal due to its inappropriate location and safety concerns.



MAJOR PATH

The existing major spine path that forms the boundary to the upper Reserve is constructed from concrete and has been identified for an upgrade due to its ageing and deteriorating condition.



CARPARK

The existing carpark is situated in the north-eastern corner of the Reserve. There are safety concerns with the current configuration as it attracts anti-social behaviour. A reduction in size to improve the functionality has been identified.



LOWER RIVER PARK

The lower section of the Reserve is situated on the flood plains of the River Torrens. The 'lower river park' consists of large natives, weedy willows and open areas of grass.



OPEN SPACE

The majority of the upper Reserve comprises of a large open grassed area. Almost 3 hectares in size, this area is currently in poor condition due to the lack of irrigation. During summer, the space becomes extremely dry and lacks amenity.



FOURTH CREEK

Fourth Creek is located along the northern corner of the Reserve boundary. It is currently heavily vegetated and flows during winter.



CANOE SCAR TREE

There is an existing Canoe Scar Tree located within the Reserve. The City of Norwood Payneham & St Peters is currently in discussions with the Kaurna Traditional Owners regarding possible options for this culturally significant item.



LINEAR PARK

The Torrens Linear Trail runs through the Reserve, crossing Fourth Creek and going onto Campbelltown - following the River Torrens. The section of trail within the Reserve has been identified for an upgrade.



RIVER FLOOD PLAIN

The lowest section of the Reserve is situated on the banks of the River Torrens and during heavy storm events, this area is subject to regular inundation. Any new infrastructure or use of this area must be carefully considered.



PICNIC FACILITIES

There is currently seating and bbq facilities located along the major spine path. These items have been identified as needing to be upgraded.

SITE ANALYSIS

SPATIAL COMPARISON + POTENTIAL USE

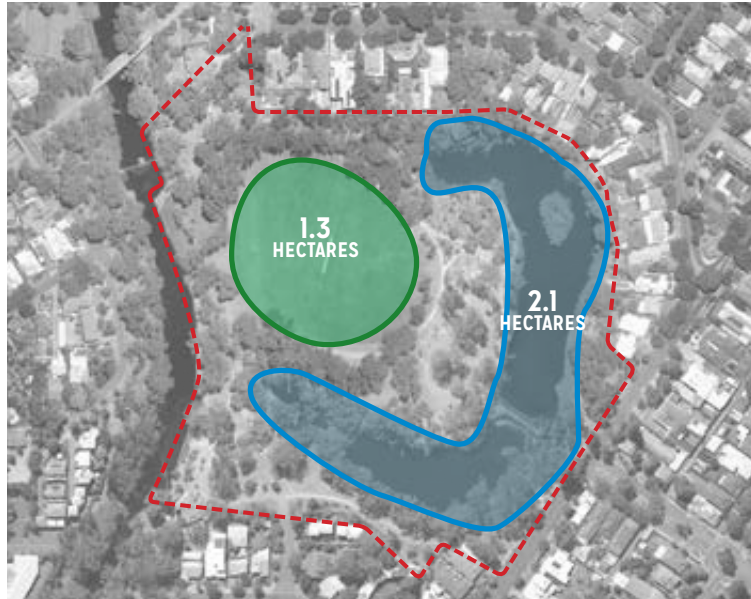
COMPARISON

As part of the design development phase, a comparison was undertaken on the size of similar Reserves and parks within the Eastern Suburbs. This comparison was able to effectively demonstrate that even with the inclusion of the wetland, the Reserve would still retain a significant amount of open space.

FELIXSTOW RESERVE 7.1 HECTARES



ST PETERS BILLABONG RIVER PARK 8.1 HECTARES



PAYNEHAM OVAL 4.2 HECTARES



LINDE RESERVE 2.5 HECTARES



ADEY RESERVE 2.0 HECTARES



PEMBROKE / KENSINGTON OVAL 6.5 HECTARES



SITE ANALYSIS

MOVEMENT + CONNECTIONS

STRATEGIC CONTEXT

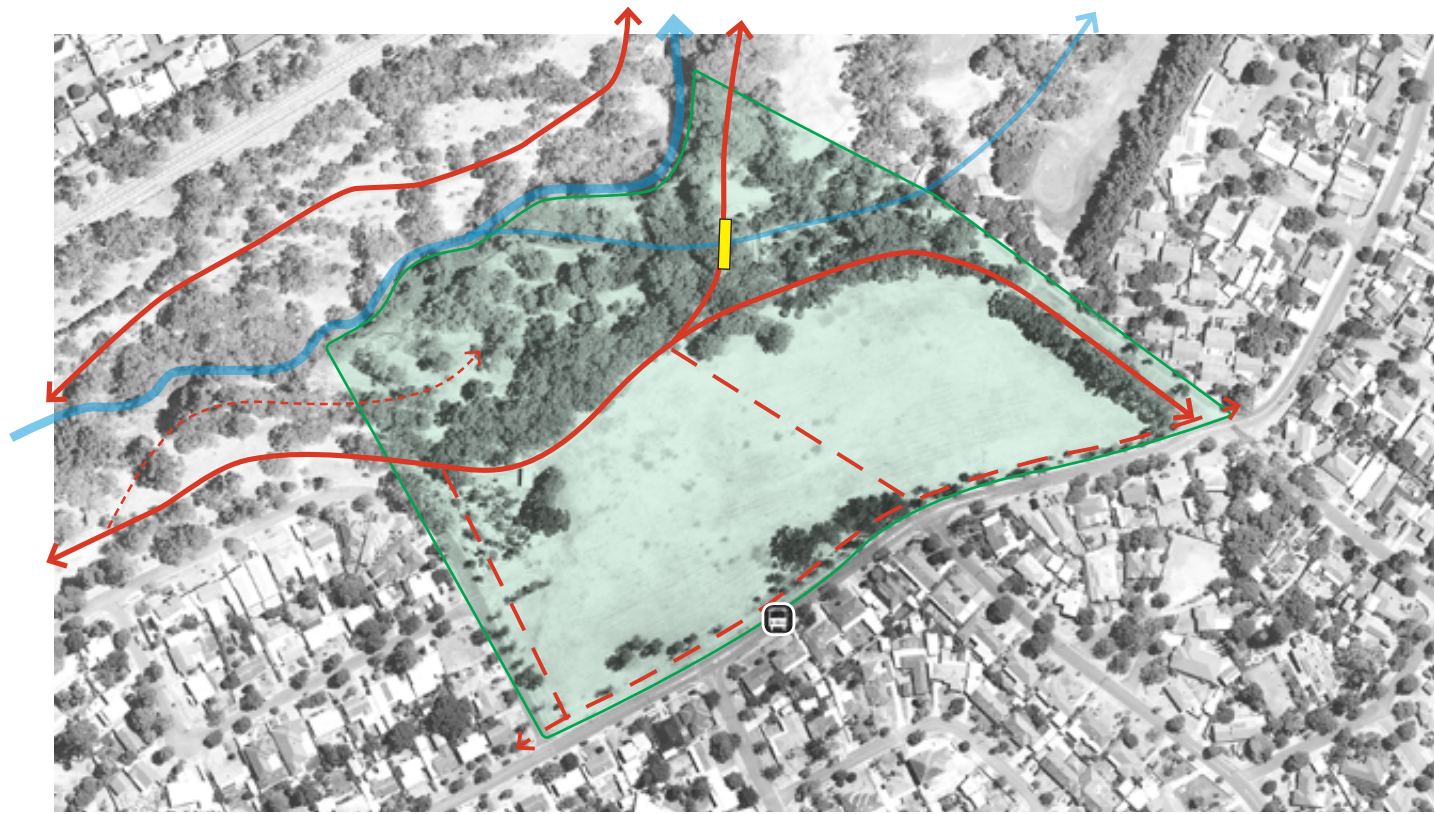
Felixstow Reserve is located in the suburb of Felixstow, which forms part of the City of Norwood Payneham & St Peters. The Reserve is located along the south eastern banks of the River Torrens and framed by Langman Grove and Riverside Drive. Langman Grove provides public transport access to the Reserve with regular bus stops. Felixstow is well connected to the River Torrens Linear Trail, which provides users with multiple access routes along the River Torrens. The Reserve is a leisurely 30 minute bike ride from the City centre. From a strategic point of view, Felixstow is well connected with the existing walking, cycling, public transport and carpark access.



- LEGEND
- Pedestrian (formal)
 - ... Bus route
 - Existing bridge/underpass
 - Bus stop
 - Felixstow Reserve
 - River Torrens
 - 4th Creek

LOCAL MOVEMENT STRUCTURE

The existing movement through the Reserve is along the major spine path and onwards along the Linear Trail. There are also several informal paths which reflect existing desired paths, these are shown by the red dash lines. The new design will use the desired lines and major movement routes to form the core structure of the Reserve.



- LEGEND
- Pedestrian (formal)
 - - - Pedestrian (informal)
 - Existing bridge/underpass
 - Bus stop
 - Felixstow Reserve
 - River Torrens
 - 4th Creek

CONSULTATION SUMMARY

REFER TO APPENDICES FOR STAGE 1 AND STAGE 2 COMMUNITY CONSULTATION REPORTS

STAGE 1 – FELIXSTOW RESERVE ‘ASPIRATIONS’

The initial consultation phase invited the community to meet the Project Team and explore ideas and identify their aspirations for Felixstow Reserve.

The Stage 1 consultation process included:

- > Invitation/flyer letter-box dropped to residents.
- > Information provided on the Council’s website.
- > Signs located in Felixstow Reserve.
- > Advertisement in Messenger newspapers.
- > Information located at Council facilities.
- > Consultation questionnaire/survey.
- > ‘Park Day’ held at Felixstow Reserve Saturday 29 March 2014.

The Stage 1 Felixstow Reserve Park Day was attended by an estimated 150 people.

A total of 92 written submissions were received. This comprised:

- > 78 questionnaire/survey forms.
- > 14 other written comments (e.g. email, notes).

Summary of key findings:

- > Overall support for a wetland.
- > Strong support to retain an open space area for informal sport and recreation.
- > Desire to maintain the open and natural character of the Reserve.
- > Support to improve irrigation and quality of turf.
- > Support for natural play rather than standard play equipment.
- > Safety concerns about the existing toilet and car park area.
- > Desire for new, equal access pathways.

STAGE 2 – FELIXSTOW RESERVE MASTERPLAN CONCEPT

Developed following the Stage 1 consultation, the Felixstow Reserve Masterplan Concept was placed on consultation from 21 May – 13 June 2014.

The Stage 2 consultation process included:

- > Invitation/flyer letter-box dropped to residents.
- > Information provided on the Council’s website.
- > Signs located in Felixstow Reserve.
- > Advertisement in Messenger newspapers.
- > Information located at Council facilities.
- > Consultation questionnaire/survey.
- > ‘Park Day’ held at Felixstow Reserve Saturday 31 May 2014.

The Stage 2 Felixstow Reserve Park Day was attended by an estimated 120 people.

A total of 87 written submissions were received. This comprised:

- > 69 questionnaire/survey forms.
- > 18 other written comments (e.g. email, letters).

Summary of key findings:

- > Majority support for each of the major features included in the Draft Concept, including the wetland and open space (kick-about) area.
- > Strong interest in opportunities for play and interface with the wetland.
- > Support for new park infrastructure (i.e. shade and shelters, seating, BBQ/picnic facilities and new public toilet and park pavilion).
- > Support for new fitness equipment and running path with distance markers.
- > Majority support for the games and activity space and the multi-purpose court.
- > Support for natural play in the lower river park area.

The Felixstow Reserve Masterplan Concept was endorsed by the Council in September 2014.

STAGE 3 – FELIXSTOW RESERVE MASTERPLAN

(Current consultation)

The Felixstow Reserve Masterplan was developed following the Stage 2 consultation.

This third and final round of consultation presents the Masterplan (this document) to the community for comment, prior to its finalisation.

FELIXSTOW RESERVE MASTERPLAN CONCEPT ENDORSED BY COUNCIL - SEPTEMBER 2014



PARK DAYS - MARCH 2014 + MAY 2014

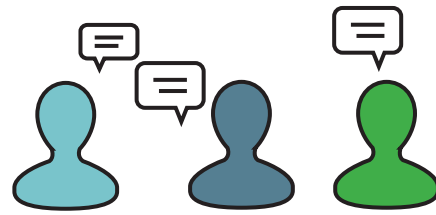


CONSULTATION

WHAT THE COMMUNITY TOLD US

REFER TO APPENDICES FOR FURTHER DETAIL

PARK DAYS MARCH & MAY 2014
COMMUNITY FEEDBACK



*“Previous consultation and community input has shaped where we are today - we have **listened** and **embraced your feedback!**”*

Kids were very keen on table tennis area

I think the proposed plan looks FABULOUS! Can't wait to see it come to fruition!

Educational sign postings, bird identification signs etc... would be great

Logs, stepping stones near river is a great idea

Great plan

I am totally in support of the plan and concept, wetlands are great

When not eighty years, I loved running around the perimeter of that Felixstow Reserve

The footprint of the wetlands is much bigger than I expected but should look pretty impressive when complete. I particularly like the paths that cut through the different sections and viewing platforms

Looks wonderful. Looking forward to it

More seating needed and seating for grandparents to watch children

Would not like to see existing trees removed

Yes! Kids love the natural play

I have very fond memories of yabbing “down at the creek”, building cubby houses in what was once deep reed beds, and getting lost in the wonder of the Morning Glory kingdoms

Different fitness stations throughout the path would be good

I am very excited with the plan. Great concept and catering for many different tastes and activities

The lower area is very magical and lovely but underutilised... some more development to encourage people to use it would be good

More DDA compliant + wheelchair, pram friendly

We would like to see an improved bike lane along with night time LED's to light the path. Separate walking traffic and cycling would be good

Will revitalise the space and general area

Very happy with the proposed concept - running, walking, exercise facilities, native flora and water!

MASTERPLAN

VISION

The Felixstow Reserve Masterplan has been designed to guide the redevelopment of this significant piece of open space, in order to enhance and realise the full potential of this regional asset.

The Felixstow Reserve Masterplan provides the overall spatial and functional layout for the Reserve, utilising the proposed wetland to best effect, while maintaining important open space. The Masterplan establishes key areas that will activate the site, through the inclusion of natural play spaces, open recreation areas, a wetland and its associated infrastructure, including land bridges, stepping stones and viewing deck.

Felixstow Reserve has enormous potential to become one of the most innovative Regional level open space assets within the City, as well as one of the most engaging Reserves along the River Torrens corridor.

Once completed this Major Project will provide the community with a well-designed and innovative recreational asset, which effectively integrates the proposed wetland into the overall design of Felixstow Reserve.

The intention of the Masterplan is to provide the framework for the future development of the Reserve. It builds on the positive qualities and attributes of the Reserve and provides direction for future improvements that will realise the Reserve's full potential.

The Masterplan proposes a development framework that can be accommodated within realistic budgetary expectations. Together with the ERA Project this framework will address the necessary 'next step' in the Reserve's evolution, increasing functionality, safety and opportunities for recreation in the Reserve.

KEY FEATURES

Key features of the Masterplan include:

- > Wetland: land bridges, stepping stones and viewing decks
- > BBQ and picnic facilities
- > Seating and rest areas
- > Shelters
- > New public toilets and park pavilion
- > Open lawn (kick-about) area
- > New tree layer and vegetation
- > Accessible pathways and designated walking / running loop
- > Natural play (e.g. boulders, stepping stones, mounds, logs etc)
- > Car parking
- > Fitness equipment
- > Off-leash dog area (maintain current hours)
- > Cultural Heritage and Interpretation
- > Signage and Wayfinding



FELIXSTOW RESERVE MASTERPLAN



- LEGEND**
- Major sealed path
 - Internal unsealed path
 - Irrigated lawn
 - Natural park
 - Vegetated bank
 - Planted wetland
 - Open water wetland
 - Bio-Swale
 - Weir
 - Stepping stones
 - Fitness / activity station
 - People
 - Hedge barrier
 - Stepped path
 - Table tennis
 - Shelter / bbq / picnic facility
 - Seating
 - Picnic setting
- Central pavilion & toilet
 - Carpark
 - Natural play (possible locations)
 - Multi-purpose court
 - Games and activity space
 - Viewing deck
 - Boardwalk crossing
 - Land bridge
 - Canoe Scar Tree (proposed)
 - Weir
 - Bus stop and car drop off / pick up zone
 - Pumping station
 - Screen pit
 - Planted mound
 - Parking



WETLAND

ERA COMPONENT

OVERVIEW

The adjacent plan illustrates the indicative functional layout for the wetland, which includes:

- > **1 main inlet pond**
- > **3 main wetland ponds**
- > **3 bio-swale ponds**

COMPONENTS

The following elements are part of the ERA funded project:

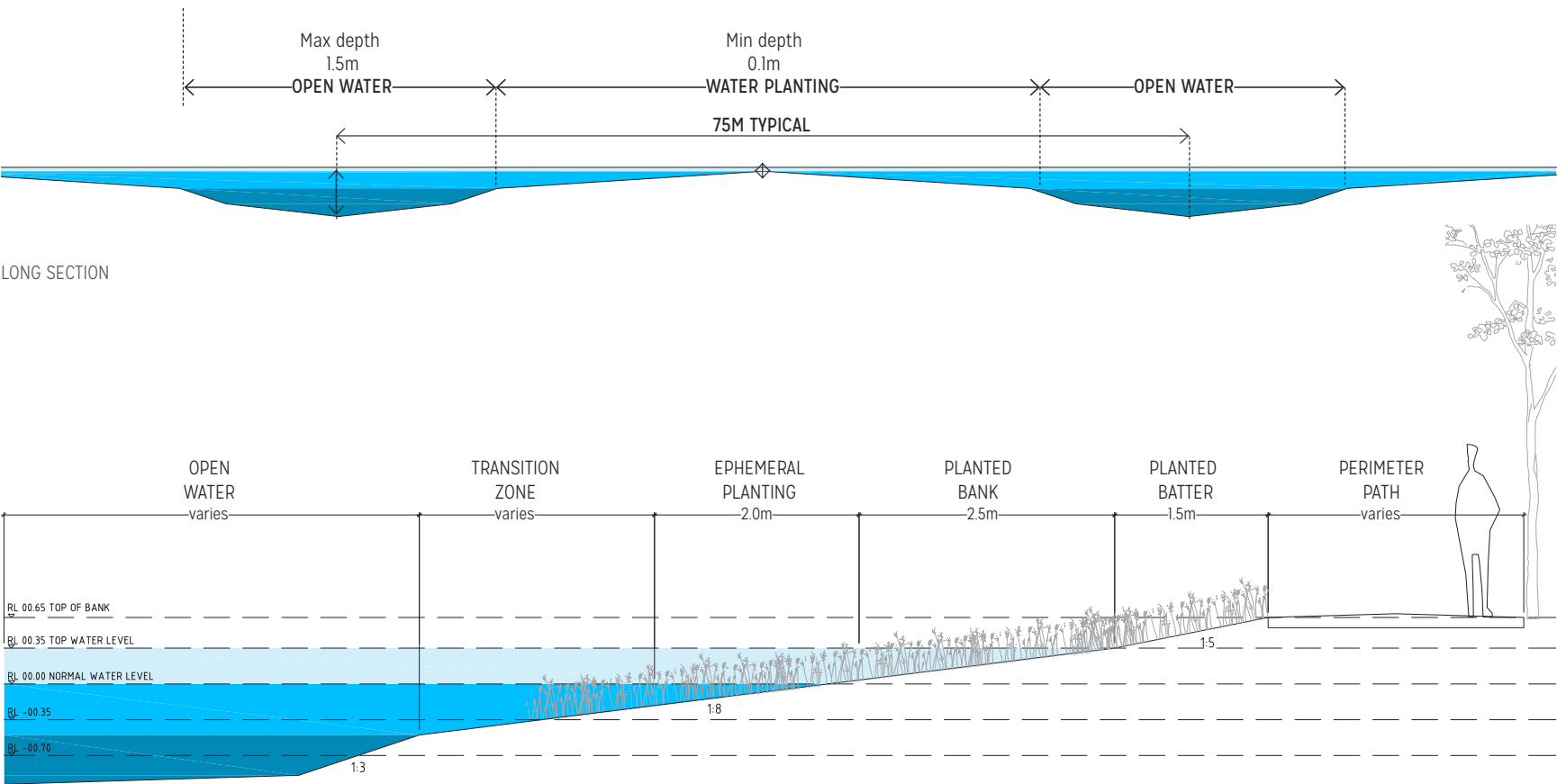
- > Wetland
- > Bio-swale
- > Bulk earthworks
- > Stepping stones
- > Boardwalk crossing
- > Viewing deck
- > Viewing platform
- > Land bridge
- > Minor access paths
- > Wetland planting
- > Wetland tree planting
- > Pump House
- > Wetland signage



LEGEND

- Planted wetland
- Open water
- Vegetated bank
- Bio-swale

TYPICAL WETLAND PROFILES



BANK PROFILE

WETLAND CHARACTER



WETLAND ELEMENTS

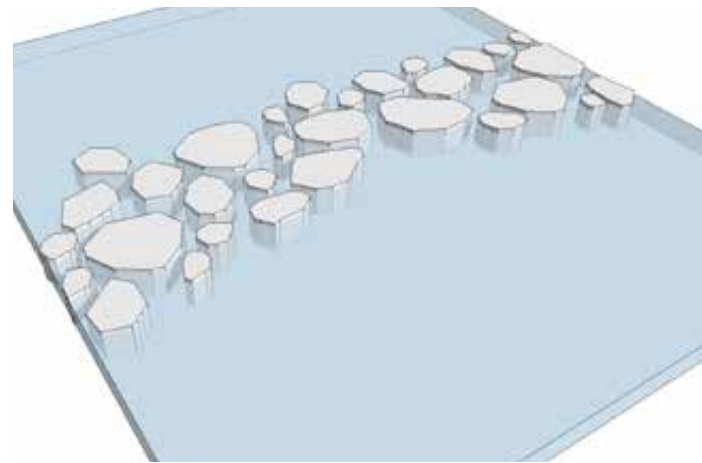
VIEWING PLATFORM

- > Raised area
- > Stabilised and compacted decomposed granite
- > Low stone seating wall
- > Natural rocks to surrounds
- > Interpretive signage, wetland cycle and water movement etc.



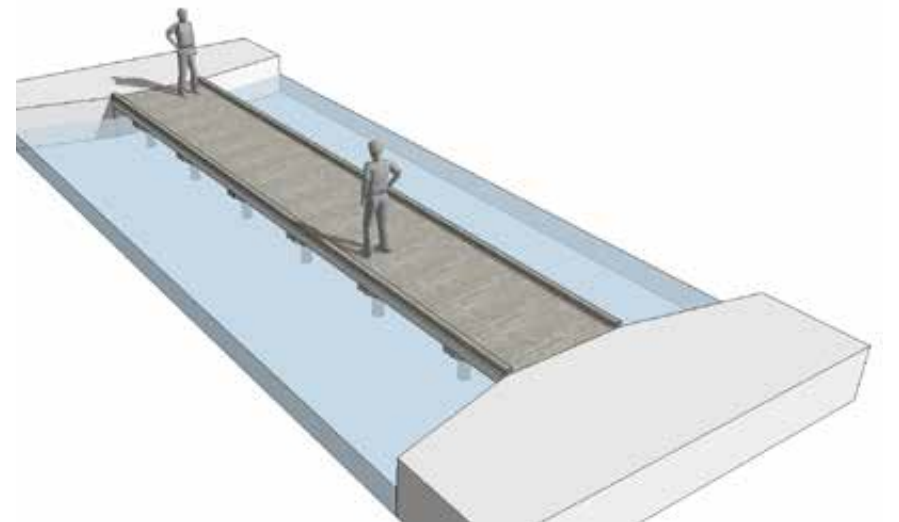
STEPPING STONES

- > Interactive and intended for use
- > Shallow water and planting either side
- > Natural stonyfell or carey gully selected boulders
- > 50-100mm clearance from median water levels



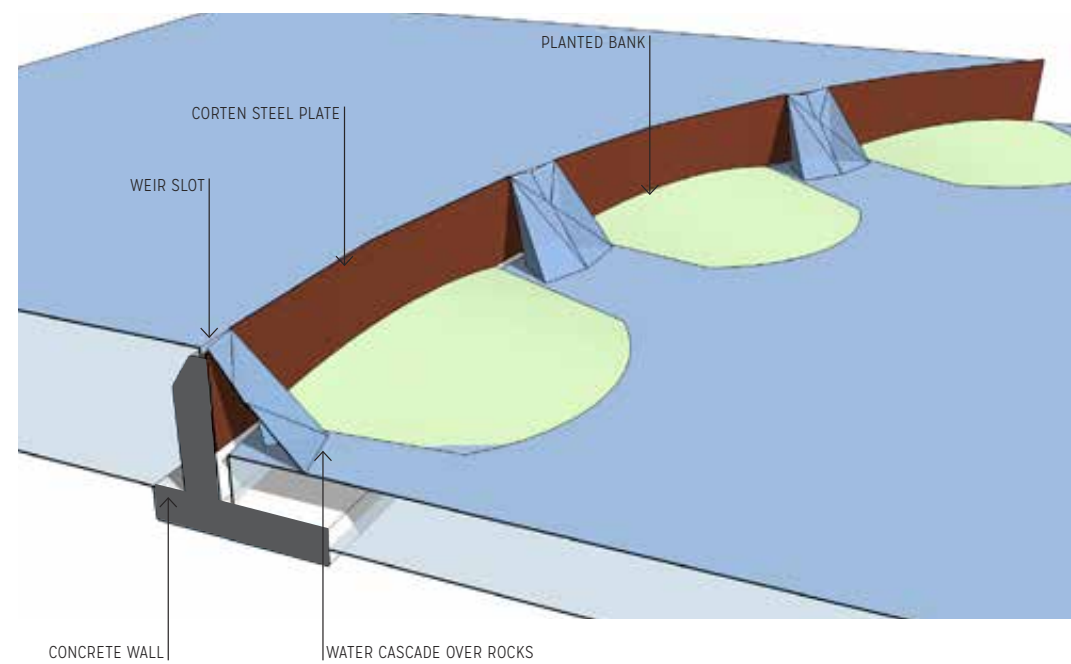
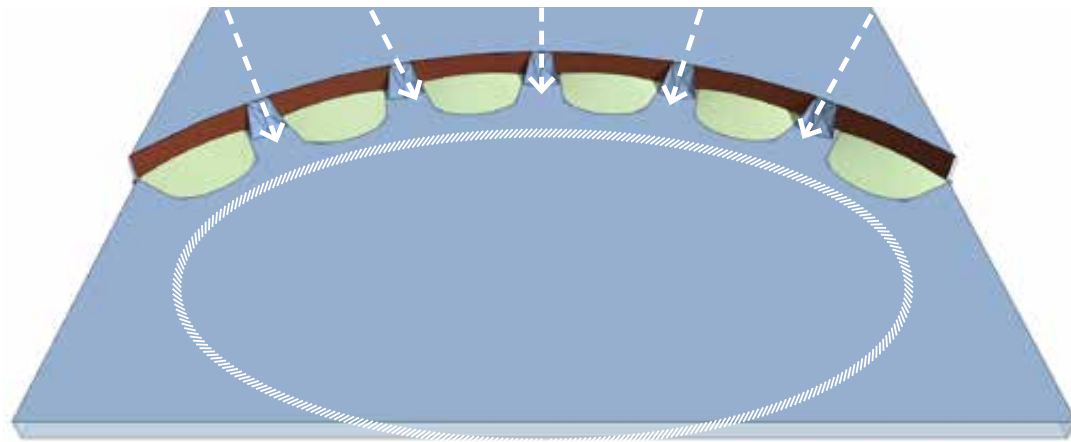
BOARDWALK CROSSING

- > Class 1 Hardwood Decking
- > Kick rail only
- > Straight
- > 2000mm width
- > 12m length
- > Provisions for future lighting



WEIR

- > Curved layout
- > Concrete structure
- > Corten steel weir piece
- > 700mm water drop
- > 600mm wide chutes/openings
- > 30mm water flow depth



VIEWING DECK

- > Timber / steel structure
- > Hardwood Decking
- > Steel balustrade with timber top rail
- > Signage included (no duck feeding)
- > Seating provision



CULTURAL HERITAGE + INTERPRETATION MASTERPLAN LAYERS

The proximity of the River Torrens (Karrawirra Parri) to Felixstow Reserve provides an opportunity, in consultation with the Kurna Traditional Owners, to illustrate the rich cultural history of this significant waterway for Aboriginal people, their traditional seasonal activities, and where appropriate, mythological stories connected to the river, as part of the redevelopment of the Reserve.

This Project also provides an opportunity to incorporate into the Masterplan, and subsequent redevelopment of the Reserve, the interpretation of the Canoe Scar Tree, including sensitively considering and identifying the best location for this culturally significant item.

Opportunities:

- › The Canoe Scar Tree will be the primary cultural marker for the Project and at the forefront of the interpretive theme for the area.
- › Interpretive signage and Kurna cultural markers will be utilised, in both Kurna and English, and will be provided throughout the Reserve, including around the proposed natural play area and revegetated wetland.
- › The presence and importance of the Ibis and their significance to the Kurna people will also be acknowledged.
- › A bush tucker food and medicine trail with native plants will be incorporated into the revegetated wetland and along the River Torrens Linear Trail.
- › Native plantings including rushes suitable for basket weaving will be incorporated into the revegetated wetland as part of a dedicated bio-swale.
- › Educational opportunities will be explored.

BOTANIC GARDENS WETLANDS EXAMPLES



CULTURAL HERITAGE + INTERPRETATION EXAMPLES





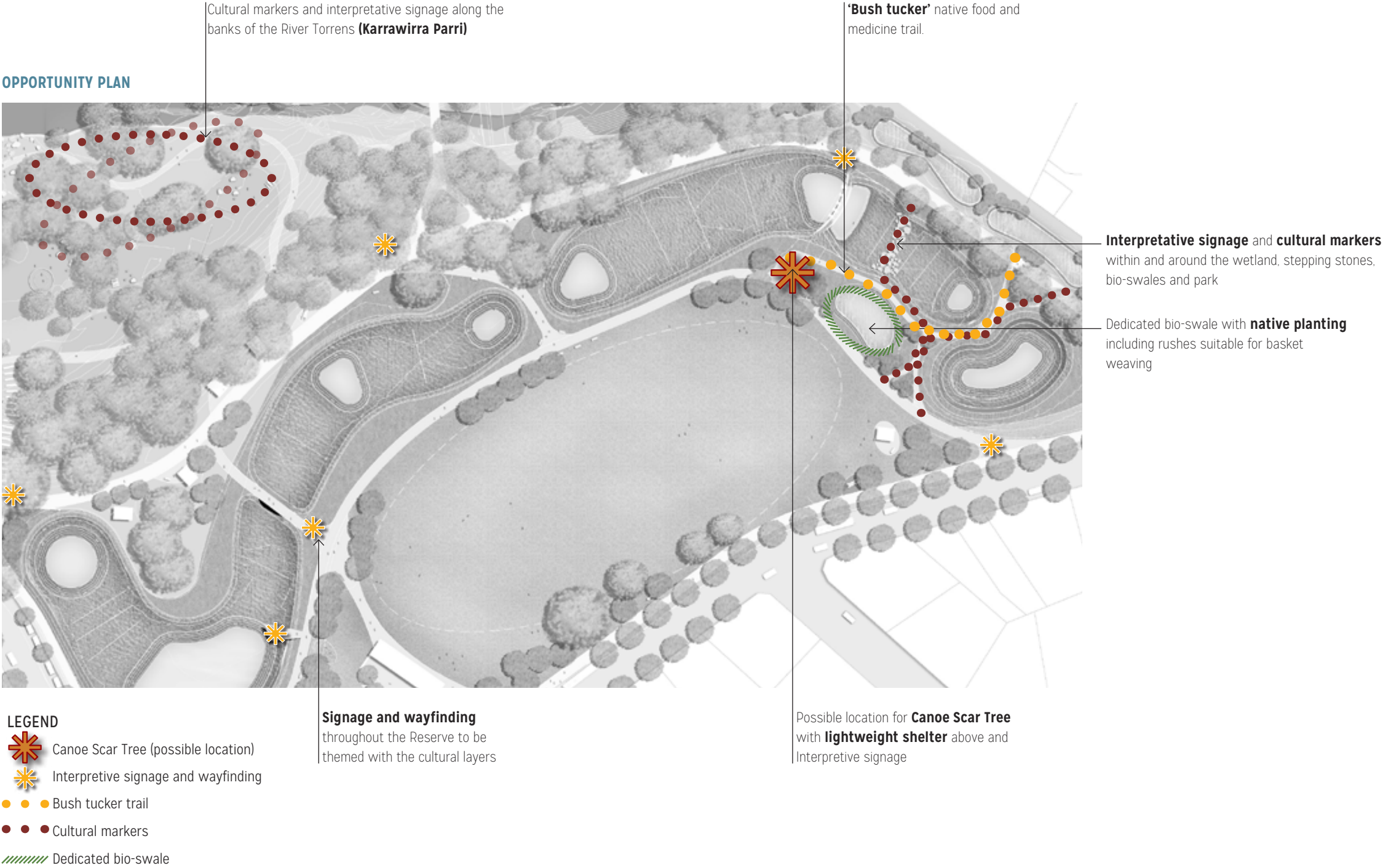
Canoe Scar Tree - Felixstow Reserve



Old Gum Tree Reserve, Port Adelaide



Tree of Knowledge shelter, QLD



PATHWAYS + ACCESS MASTERPLAN LAYERS

PROPOSED

The Masterplan proposes to consolidate and upgrade the entries and internal movement pathways within the Reserve.

Key moves:

- 01. Upgrade major spine path to a best practice shared use path. Establish a precedent path typology for the linear path trail that includes:
 - > 4m wide hotmix
 - > linemarking
 - > 2 way pedestrian
 - > separated bike lanes
- 02. New Access paths
 - > sealed
 - > Disability Discrimination Act (DDA) compliant
- 03. Provide a pathway network to connect the different facilities within the Reserve.
 - > compacted rubble used for minor paths and connections.

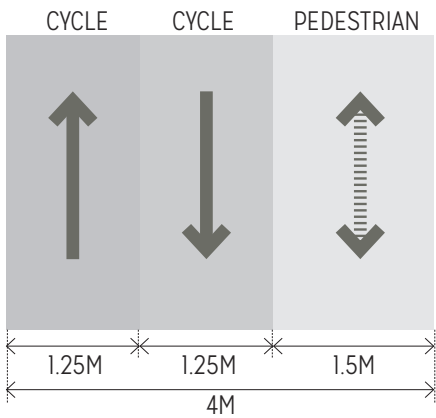
PATH STRUCTURE PROPOSED NETWORK



LEGEND

- Major Spine Path
- Typical Path
- Secondary Path
- Connection Path
- ▭ Carpark 90 degree
- ▬ parking
- Bus stop
- ▭ car drop off / pickup zone / accessible parking

TYPICAL PLAN: MAJOR SPINE PATH



MAJOR SPINE PATH - 4M



TYPICAL PATH - HOTMIX



SECONDARY PATH - COMPACTED RUBBLE



CONNECTION PATH



MATERIALS + SURFACES

MASTERPLAN LAYERS

The Masterplan proposes a consistent palette of materials and construction techniques that:

- > are consistent with Council standards and the River Torrens Park setting;
- > blend and contribute to the residential setting; and
- > provide a quality of amenity to support the needs of the local community.

Materials are chosen for their aesthetics, robust nature and long term cost effectiveness.

Painted surfaces are avoided - although the capital cost of natural 'unfinished' materials may be higher initially, the whole-of-life costs are lower through reduced maintenance and recurrent costs.

Materials and finishes have been selected for their robust vandal resistant qualities.

IRRIGATED GRASS

- > Consolidate the open lawn area and enhance as a key feature of the Reserve.
- > Re-grade and top-dress to improve drainage.
- > Provide a new irrigation system to the Reserve that utilises the new recycled water system

PROPOSED IRRIGATED GRASS PLAN



LEGEND

 Irrigated grass



IRRIGATED GRASS

APPLICATIONS: GRASS RECREATION AREA



COMPACTED SAND (STABILISED)

APPLICATIONS: RECREATION ZONES, BBQ, PICNIC SPACES



HOTMIX (AC7)

APPLICATIONS: MAJOR PATHS, TYPICAL PATHS



COMPACTED RUBBLE (STABILISED)

APPLICATIONS: SECONDARY PATHS



LIGHTLY EXPOSED INSITU CONCRETE

APPLICATIONS: FEATURE AREAS, PAVILION



CLASS 1 HARDWOOD DECKING

APPLICATIONS: BOARDWALK, VIEWING DECK

STRUCTURES

MASTERPLAN LAYERS

Built structures support the use and amenity of our parks and Reserves.

The existing public toilet in Felixstow Reserve is unsafe, old and run-down and therefore should be removed. It is proposed that the existing toilet block is replaced with the new pump station for the wetland.

A new central pavilion and toilet block is proposed near the Langman Grove entrance. The new facility will contribute towards the successful function of the Reserve, increase amenity and support a wide range of recreational activities.

No additional shade structures other than the Central Pavilion and over the bbq and picnic facilities are proposed as it is considered the existing trees provide sufficient shade. The existing trees will be supplemented by additional tree planting.

New structures are to be designed to fit into the park setting with minimum visual impact. This will be achieved through appropriate siting, built form and use of materials. The pavilion should be designed with the following principles:

- > Architecturally appropriate for the Reserve
- > Open sight-lines through and around the structure
- > Sympathetic and in scale to the park
- > Best practice safety features and design
- > combined wash basins
- > DDA compliant access

Key recommendations:

01. Demolish existing public toilet
02. Provide a new central pavilion and toilet facility
03. Provide new bbq and picnic shelters
04. ERA to provide new pump station

NEW STRUCTURES



LEGEND

- Pavilion / Toilet
- Lightweight shelter + BBQ/Picnic Facility
- Possible Canoe Scar Tree shelter
- Possible pump station by ERA (replaces existing toilet block)

LIGHTWEIGHT PICNIC SHELTER EXAMPLES

Botanic Gardens Woven Hut with thatched roof by Oxigen



Bungala Park Shelters by Oxigen



PAVILION + TOILET EXAMPLES



Ballast Point Park, Sydney



Dunstone Grove - Linde Reserve Toilet Block by Hassell



Weston Park Toilet Block by Oxigen

FURNITURE

MASTERPLAN LAYERS

A suite of contemporary, robust outdoor furniture, elements and their arrangement is part of a well-integrated and well-maintained public park. The design of park furniture and elements for Felixstow Reserve provides the opportunity for a consistent Council character that is both functional and attractive.

Materials and finishes of the park elements have been selected for their robust vandal resistant qualities.

The range of furniture includes:

- > Bench seating
- > Picnic settings
- > Drinking fountains
- > Cycle racks
- > Barbecues
- > Litter and recycling bins
- > Lighting
- > Fitness stations



POLE TOP LIGHT

SUPPLIER: TBC
MODEL: WARM LED FITTINGS
FINISH: STEEL, 2 COAT EPOXY PAINTED OR HIGH QUALITY POWDERCOAT



BENCH SEAT

SUPPLIER: LANDMARK
MODEL: NEOLIVIANO SEATING
FINISH: WITH OILED FINISH (NOT VARNISH)



PICNIC SETTING

SUPPLIER: LANDMARK
MODEL: PICNIC SETTING - 'NEOBANQUETA' BENCH KSC061 WITH TABLE TO MATCH
FINISH: WITH OILED FINISH (NOT VARNISH)



FITNESS STATION

SUPPLIER: TBC
MODEL : VARIES
DESCRIPTION : MUST BE ROBUST VANDAL PROOF AND SUIT VARYING AGES AND ABILITIES.



BIKE RACKS

SUPPLIER: PLYMPTON STEEL
MODEL: ACC STANDARD
FINISH: STAINLESS STEEL



DRINKING FOUNTAIN

SUPPLIER: AQUAFILL AUSTRALIA
MODEL: DDA ACCESSIBLE FOUNTAIN AND REFILL STATION
FINISH: ALUMINIUM AND STAINLESS STEEL



BARBEQUES

SUPPLIER: CHRISTIE PARKSAFE
MODEL: 2 MODULE



BIN

SUPPLIER: STREET FURNITURE AUSTRALIA
COLOUR: GREY
NOTES: TO MATCH NPSP STANDARD

SIGNAGE + WAYFINDING MASTERPLAN LAYERS

Felixstow Reserve currently has limited signage.

The Masterplan proposes a co-ordinated signage network throughout the Reserve to improve legibility, safety and encourage community and visitor use.

The signage network should provide advisory information for the Reserve facilities and directional information for other destinations surrounding the Reserve. To add additional value, interpretive signage should be provided to educate and entertain park users.

There is opportunity to include signage relating to the cultural heritage of the area and incorporating the existing Canoe Scar Tree through discussions with the Kaurna Traditional Owners. For further information, refer to the Cultural Heritage and Interpretation section.

Signage layers may include:

- > Safety
- > Interpretive
- > Wetland and water cycle
- > Fauna
- > Flora
- > Indigenous (Canoe Tree)
- > Directional
- > Park uses (dogs etc.)
- > Parking
- > Loop distance markers

PROPOSED SIGNAGE STRATEGY



LEGEND

- Wayfinding
- Interpretive
- Information and safety
- 1000m Loop distance markers

SIGNAGE + WAYFINDING EXAMPLES



LIGHTING

MASTERPLAN LAYERS

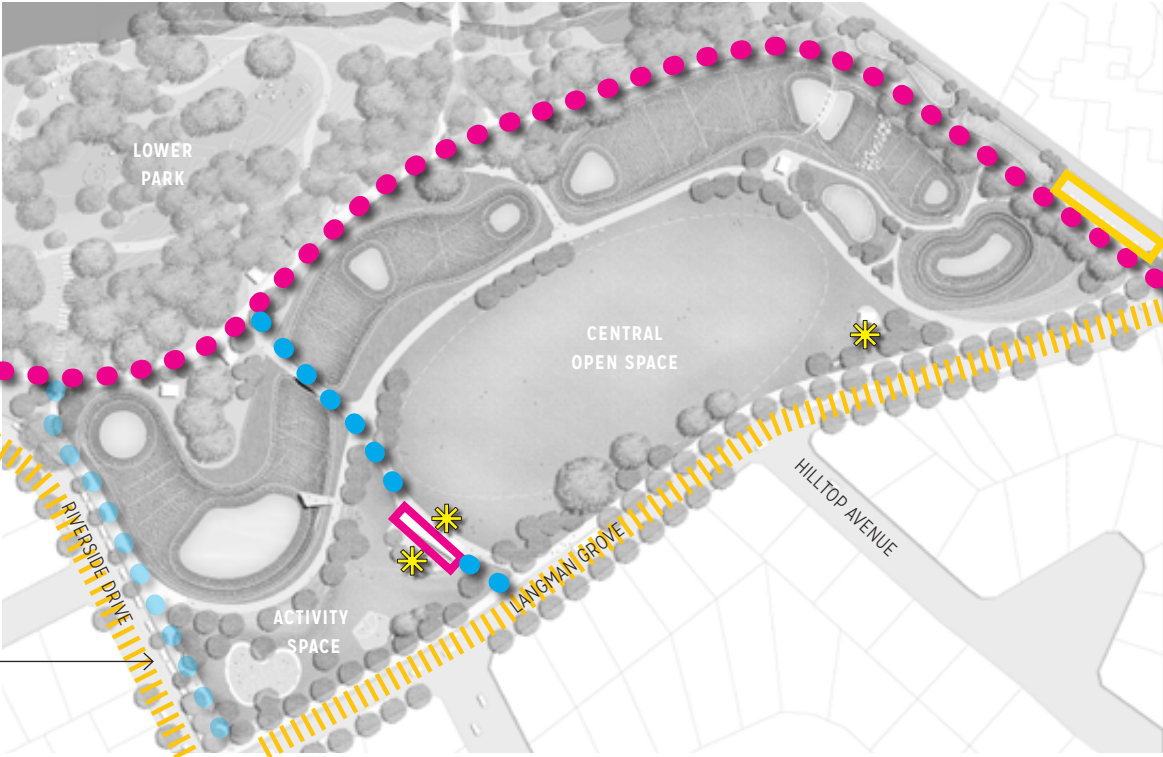
There is currently lighting along the major park path, this lighting does not appear to meet required standards and it is recommended that it is upgraded.

The lighting strategy is to:

- > Provide new path lighting along the major spine path;
- > Utilise road Reserve lighting where possible, light levels will need to be tested;
- > Utilise existing carpark lighting, light levels will need to be tested;
- > Provide new lights to paths shown on the proposed lighting strategy plan;
- > Provide new timed lights to the new pavilion / toilet block. This will need to be closely monitored to avoid anti-social behaviour; and
- > Utilise LED fittings where possible.

Depending on the level of light provided by the existing Riverside Drive lighting, additional path lighting may not be required. Lighting Levels TBC.

PROPOSED LIGHTING STRATEGY



LEGEND

- Existing road Reserve lighting (to be tested)
- Upgrade path lighting
- Possible new path lighting
- New pavilion and area lighting
- Existing carpark lighting
- External power supply

EXISTING LIGHTING



CARPARK LIGHT



LANGMAN GROVE LIGHTING



MAIN PATH LIGHTING

PROPOSED LIGHTING



PATH LIGHTING



AREA LIGHTING



NEW POLE TOP LIGHT

RECREATION + ACTIVITY MASTERPLAN LAYERS

The Masterplan builds on the existing activities and recreation opportunities provided in Felixstow Reserve. It enhances the existing infrastructure to accommodate a wide range of uses and activities.

People have the opportunity to use and experience the Reserve in different ways suited to their interests. The design of the Reserve is flexible to allow for new uses and activities to be introduced in the future.

- Activities include:
- > Open grass area for recreation;
 - > Picnic and barbeque;
 - > Natural playspace;
 - > Multipurpose activity space;
 - > Fitness stations;
 - > Wetland interaction and viewing decks;
 - > Stepping stones;
 - > Outdoor table tennis;
 - > Multi-purpose court (e.g. basketball, etc);
 - > Multiple pathway loops suitable for a range or recreation activities (e.g. walking, jogging, children learning to ride a bike, etc).

OFF-LEASH AREA

Dogs, off a leash, are currently permitted in Felixstow Reserve. The Masterplan suggests this should continue, however measures should be taken to control and advise usage and hours. Dogs should be discouraged from entering the wetland.

RECREATION ZONES



LEGEND

- Seating / Table
- Multi-purpose court
- Fitness / activity station
- 1 km running loop
- Viewing deck
- Games and activity space
- Central open space

RECREATION EXAMPLES



NATURAL PLAY MASTERPLAN LAYERS

Providing opportunities for natural play is a key component of Felixstow Reserve.

It is noted that Drage Reserve which is located 500m away from Felixstow Reserve towards the City, and conveniently located along the River Torrens Linear Park Trail, has a designated playground that has been identified for a future upgrade. As part of the consultation and design process, it was identified that there was not a need to replicate this style of play equipment. The Masterplan proposes that Felixstow Reserve utilises Natural Play elements that are in keeping with the River Torrens Park setting.

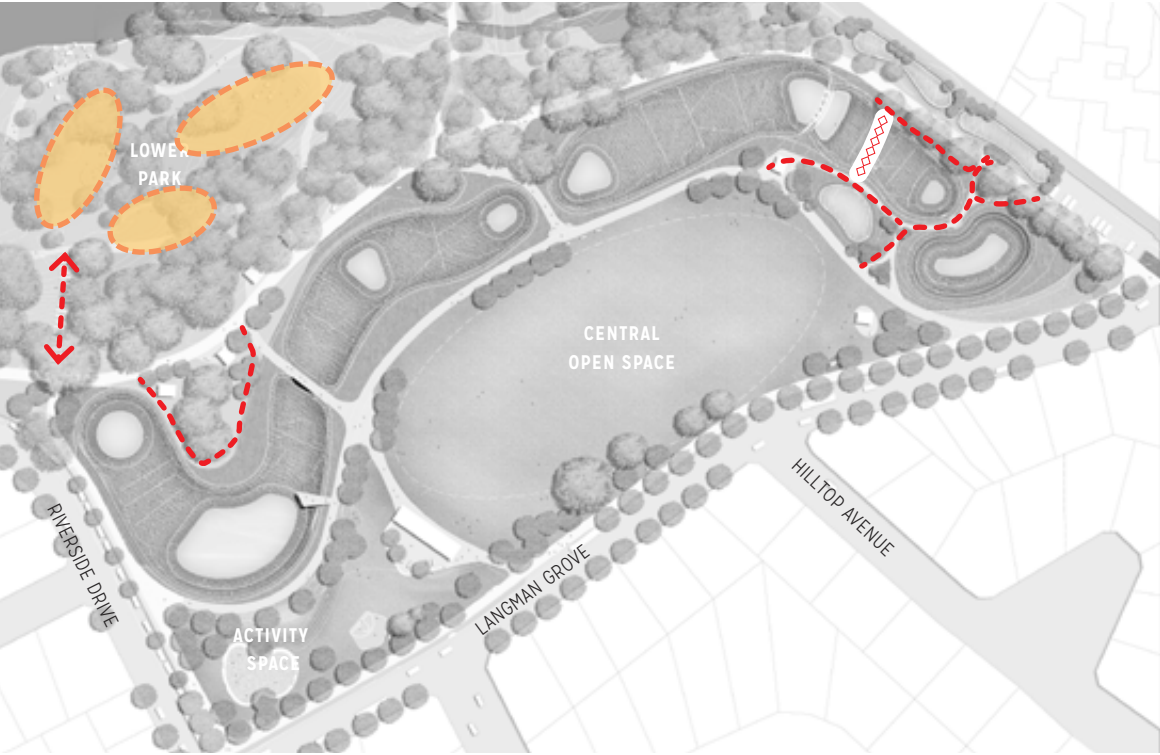
The main natural playspace is proposed for the lower park, where its riverine setting provides a perfect backdrop for unprogrammed play elements. The space will be accessible through new pathways and steps and will incorporate both new play elements and promote unprogrammed play.

Other elements within the Reserve are also intended to promote natural play, including: stepping stones, informal paths, boardwalks and viewing platforms.

The Open Space Strategy identifies Felixstow Reserve as Regional level open space: “Areas of open space which attract people from outside the Council area and appeal to a wide cross section of the community”. Felixstow Reserve is designated mainly because of its size.

- Key considerations for the proposed playspace upgrade include:
- ensuring the playspace is integrated into the landscape and includes a variety of experiences and play opportunities;
 - using natural materials that do not require external finishes are maximised reducing ongoing maintenance costs; and
 - allowing for interaction with nature, different forms, colours and textures, which encourage adventure, interpretation and imagination.

NATURAL PLAY ZONES



LEGEND

- Natural play zones
- Informal paths
- Stepping stones



NATURAL PLAY EXAMPLES



TREES

MASTERPLAN LAYERS

Existing tree planting within Felixstow Reserve consists largely of native trees. There are a smaller number of exotic species including the older poplars, lower willows and a few palms. The large majority of trees in the Reserve are Eucalyptus sp. and Corymbia sp. They provide an attractive and shady setting. The existing landscape quality of Felixstow Reserve derives from its open grass area and mature tree planting around the perimeter.

There is opportunity to remove inappropriate, crowded and ageing specimens and provide additional planting to contribute to the character and amenity of the Reserve.

The location of new tree planting is designed to support the spatial organisation of the Reserve including achieving open lawn spaces, reinforcing movement corridors and providing shade where needed.

The Masterplan recommends undertaking significant tree management to ensure that the long term health of the Reserve is maintained. The Tree Management Plan should consider health and expected longevity as well as short-term pruning and other techniques.

Proposed tree management actions:

- › Remove all Poplars, Jacaranda, Desert Ash and Willow Myrtle to allow future planting along Langman Grove
- › Remove other selected trees within the Reserve to allow for the new wetland and large open spaces
- › Undertake tree management in the lower park to remove all dead trees, invasive species, weedy willows and palms in order to open up the area and allow existing trees to grow effectively.
- › Undertake new tree planting along Langman Grove
- › Undertake new tree planting within the Reserve that assists with the overall park structure, shade and general amenity.
- › Provide trees that have seasonality and colour.



PROPOSED TOTAL TREE CANOPY AND TYPOLOGY



TREE PLANTING TYPOLOGY, indicative only

- Native Riverine
- Streetscape
- Native Streetscape
- Parkland

EXISTING SPECIES TO BE MAINTAINED AND PLANTED FURTHER



Eucalyptus sp.
River Red Gum, Iron Bark
SA Blue Gum, Flooded Gum



Eucalyptus cladocalyx
Sugar Gum



Corymbia sp.
Spotted Gum +
Lemon Scented Gum



Allocasuarina
Sheoaks



Angophora costata
Smooth Barked Apple Gum

PROPOSED SPECIES TO BE INCLUDED, INDICATIVE ONLY



Jacaranda sp.
Brazilian Rosewood



Celtis laevigata
Hackberry



Gleditsia sp.
Honey Locust 'Shademaster'



Ulmus sp.
Elms



Platanus sp.
Plane Tree



Cupaniopsis anacardioides
Tuckeroo



Quercus sp.
Oaks



Araucaria heterophylla
Norfolk Island Pine

PLANTING

MASTERPLAN LAYERS

Existing planting within Felixstow Reserve is very limited and restricted to isolated pockets of native shrubs. The Reserve is dominated by open grass areas with mature trees. The large majority of new planting will be associated with the wetland as shown in the adjacent plan.

In the lower park there is opportunity to remove some of the shrubs and lower growth to improve sightlines in accordance with crime prevention through environmental design principles (CEPTED).

Planting beds will form an important component of the Project providing a physical separation between the Reserve and the wetland. The intention is to use planting beds rather than fencing as a barrier and deterrent from people and dogs entering the wetland.

Planting beds are used to:

- > provide structure to the wetland;
- > define edges, paths and wetland;
- > stabilise soil and reduce erosion;
- > enhance amenity, interest and ecological value;
- > assist with water sensitive urban design; and
- > educate the public about local plants.

The planting strategy for Felixstow Reserve supports the use of attractive local native species which have low long-term maintenance requirements.

Planting bed design and plant selection considers:

- > location and role of planting beds;
- > shared and current irrigation and maintenance requirements;
- > avoiding use of a single species within large areas; and
- > growing conditions on this site, particularly during establishment.

Native plantings including rushes suitable for basket weaving will also be incorporated into the revegetated wetland.

For a detailed list of the proposed plants, please refer to the ERA Wetland proposal.

PLANTING PLAN



LEGEND

 Planting zones

SUITABLE PLANTING STYLES FOR FELIXSTOW RESERVE. INDICATIVE IMAGES ONLY



Open water



Wetland



Embankment



Open grass + planting



Mass planting



Embankment

CAR PARKING

MASTERPLAN LAYERS

PROPOSED

The existing carpark is situated in the north-eastern corner of the Reserve. There are safety concerns with the current configuration as it attracts anti-social behaviour. A reduction in size and re configuration to improve the functionality has been identified.

The Masterplan proposes the following moves for carparking:

- > Reduce the existing carpark from 40 spaces to 30 compliant 90 degree parks with accessible parking provided
- > Provide approximately 24 new 90 degree parks alongside Riverside Drive, including accessible parking
- > Provide a new path network that is integrated with the parking
- > Car drop off / pick up zone located on Langman Grove adjacent the bus stop that includes an accessible car park

CAR PARKING PROPOSED CONFIGURATION



LEGEND

- ↔ Proposed path
- - - Existing carpark removed
- Existing carpark to be re-configured
- 90 degree parking
- Bus stop
- Car drop off / pick up zone and accessible carpark

EXISTING CARPARK



RIVERSIDE DRIVE



VIEW 01
ILLUSTRATION

EXISTING



PROPOSED

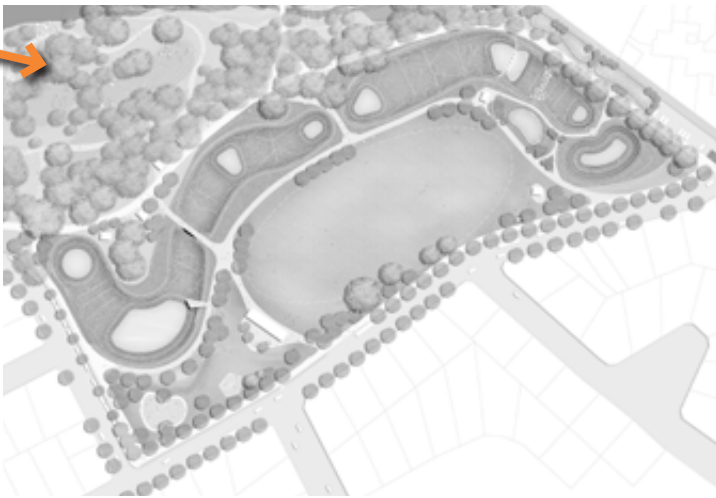


New wetland pond

Informal path

VIEW 02
ILLUSTRATION

EXISTING



PROPOSED



Improved River Torrens
interface

Informal path

Natural play elements

VIEW 03
ILLUSTRATION

EXISTING



PROPOSED



New seating areas and picnic opportunities

New shared use spine path

New path lighting

VIEW 04 ILLUSTRATION

EXISTING



PROPOSED



IMPLEMENTATION STRATEGY

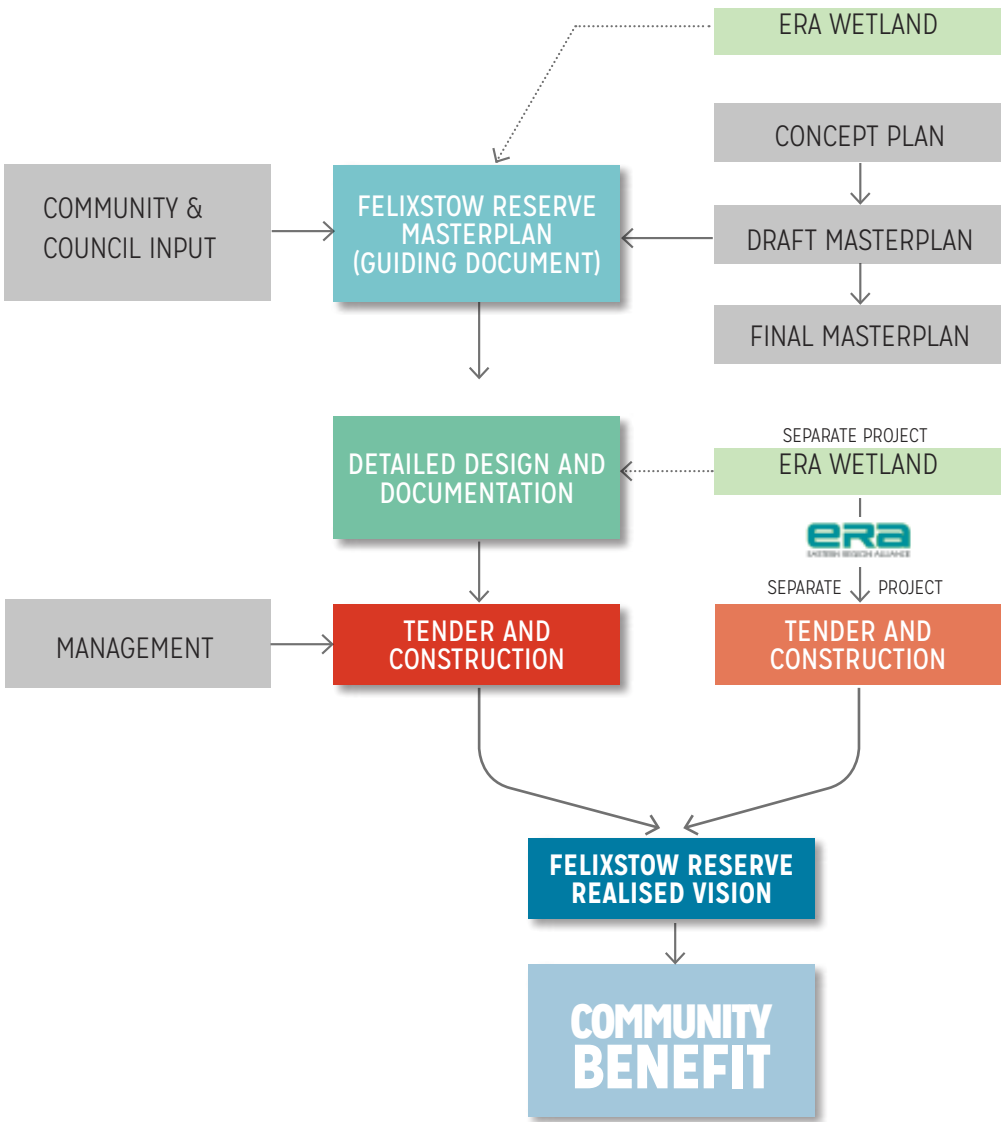
PROJECT DELIVERY

This Masterplan is the first phase in a strategic program for upgrading Felixstow Reserve. As a guiding document, it outlines a future based on Community input and achievable outcomes.

The Masterplan outlines an over-arching and coordinated vision for the Reserve, identifying projects to assist in implementation and determining forward budgets. The Masterplan does not, purposefully, provide detailed designs for particular projects. These works will occur as funds become available and partnership opportunities are realised.

Feedback received on the Masterplan Report will be considered in finalising the Masterplan, which will then be presented to the Council for adoption.

PROJECT DELIVERY DIAGRAM



SCOPE PLAN



LEGEND

- ERA scope of works
- NPSP scope boundary



ERA SCOPE	NPSP SCOPE
<ul style="list-style-type: none">> Wetland> Bio-swale> Bulk earthworks> Stepping stones> Boardwalk crossing> Viewing deck> Viewing platform> Land bridge> Minor access paths> Wetland planting> Wetland tree planting> Pump house> Wetland signage	<ul style="list-style-type: none">> BBQ and Picnic facilities> Seating and rest areas> Shelters> New public toilets and Park Pavilion> Open lawn areas (kick-about)> New tree layer> Accessible pathways and walking / running loop> Natural play elements> New car parking> Fitness equipment> Lighting> Irrigation> Signage> Cultural Heritage and Interpretation

FELIXSTOW RESERVE



MASTERPLAN

