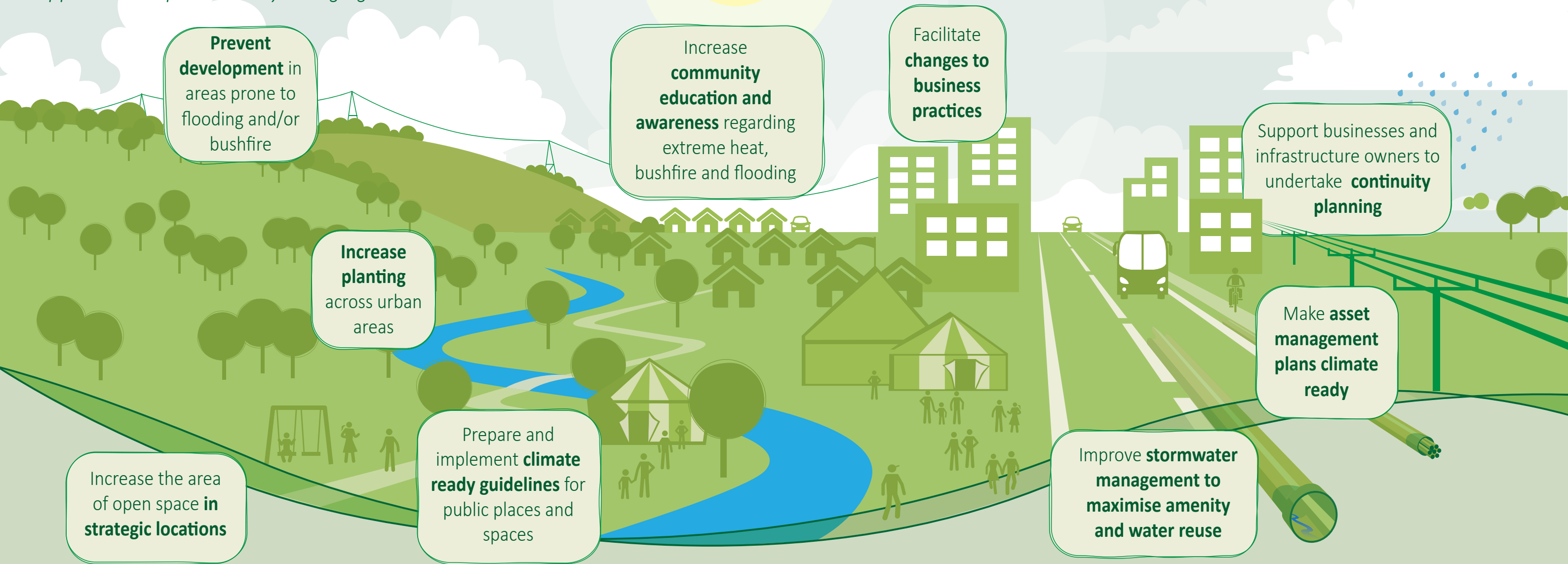


Resilient East... Actions for the Eastern Region to respond to a changing climate

Resilient East is about making sure the Eastern region remains a vibrant, desirable and productive place to live, work and visit and that our businesses, communities and environments can respond positively to the challenges and opportunities presented by changing climate.



The Resilient East Climate Change Adaptation Plan identifies key priorities for action in our region to respond to the challenges and opportunities presented by a changing climate.

Resilient East is a collaborative project being led by eight councils with funding from the South Australian and Federal Governments and working in partnership with the many and diverse organisations that have an interest and role in the long term vibrancy and vitality of the Eastern Region of metropolitan Adelaide.



FIRE RISK

The number of extreme fire risk days is projected to increase by 200% by 2090.



AVERAGE TEMPERATURE

Average temperatures are projected to increase across all seasons by between 1.5° and 2.0° by 2050.



EXTREME TEMPERATURES

The number of days over 40° is projected to double by 2050. The frequency and duration of heatwaves is projected to increase.



AVERAGE ANNUAL RAINFALL

Average annual rainfall is projected to decrease by 7% by 2050. The greatest decline is projected for Spring rainfall.



RAINFALL INTENSITY

The intensity of heavy rainfall events is projected to increase by at least 10% by 2050.

