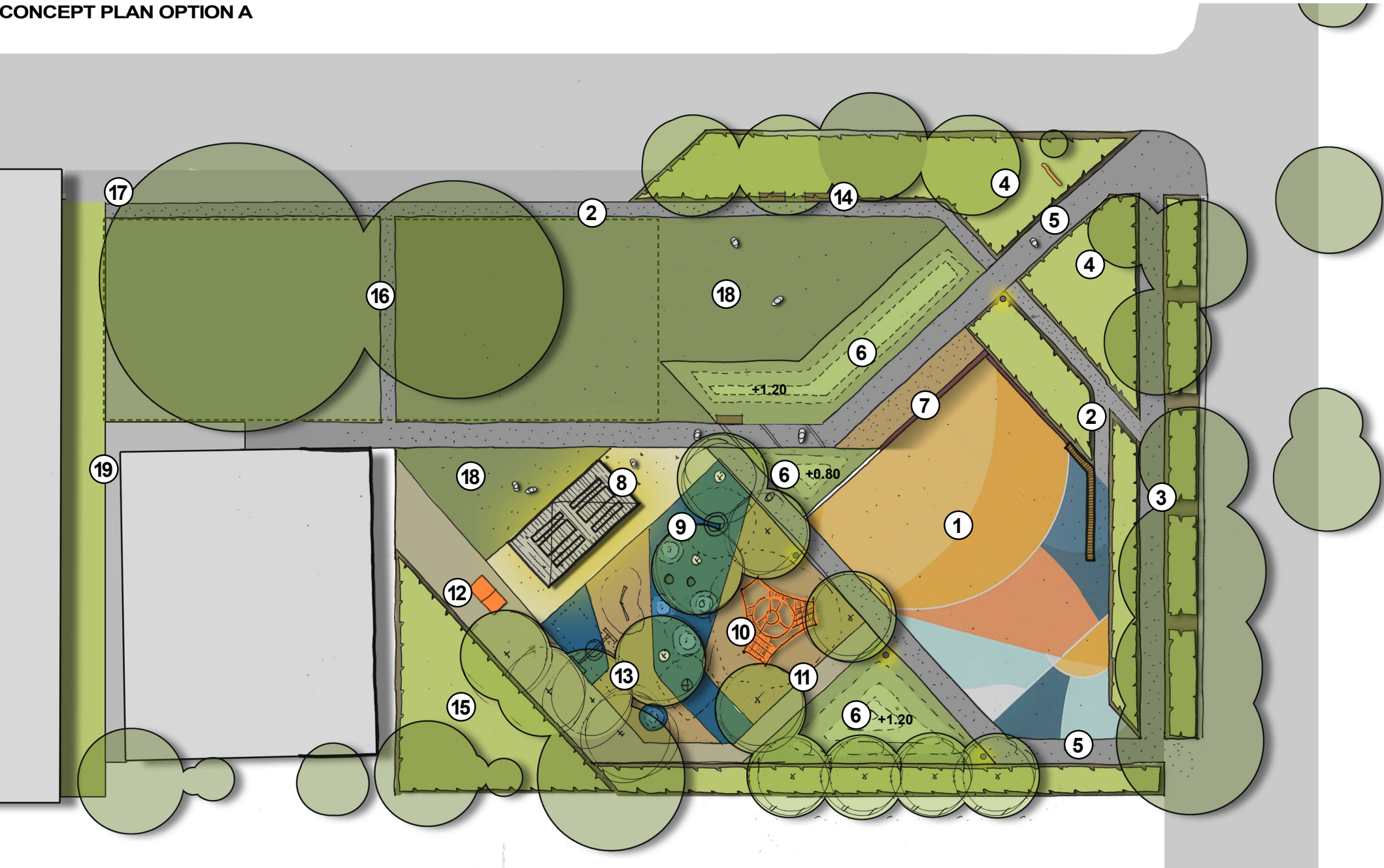
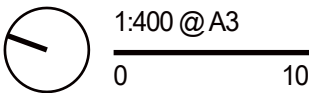
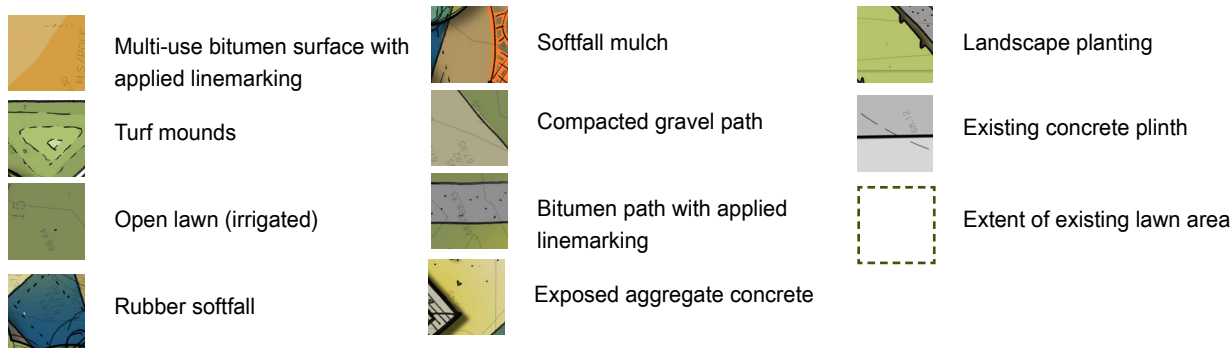


CONCEPT PLAN OPTION A



SURFACES

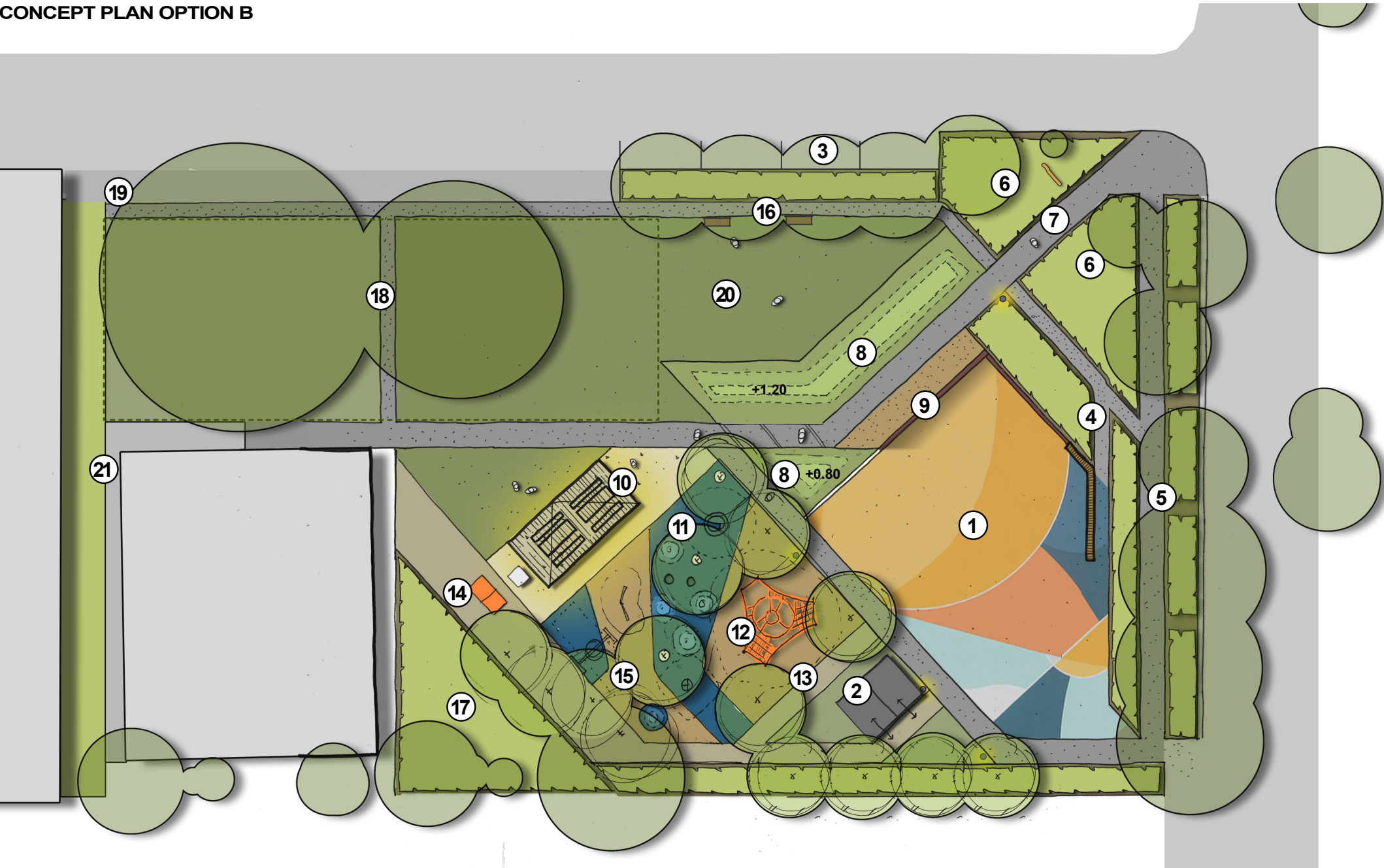


KEY

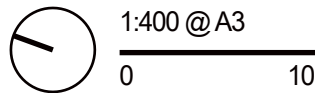
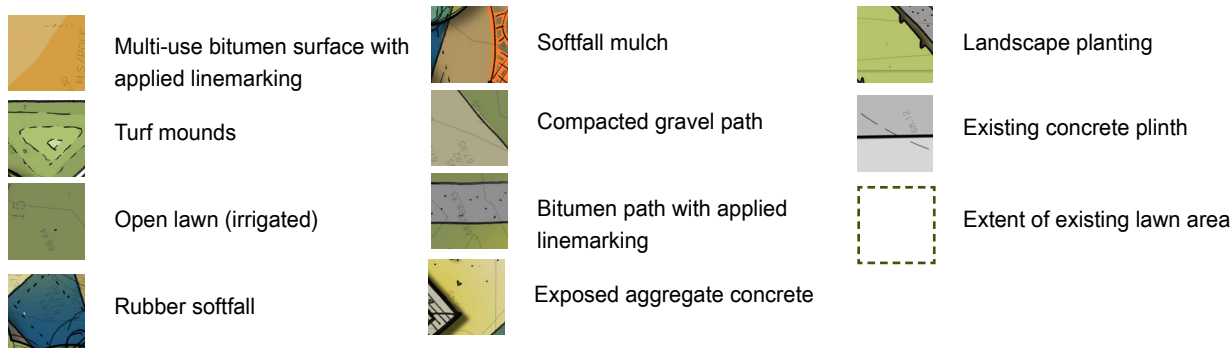
1. Multi-use surface with applied paint finish to support a range of different sporting uses e.g. tennis, basketball, netball and handball.
2. Bitumen access loop path with applied line marking e.g. fitness, scooter and access.
3. Existing pedestrian path re-aligned to support existing street trees and improve landscape buffer to road edge.
4. Landscape entry to define Reserve and increase landscape separation from adjacent road. Opportunity to develop entry signage to formalise entrance.
5. Bitumen access path with applied line marking.
6. Lawn mounds to provide level change, form defined edges and space and provide informal seating opportunity.
7. Multi-purpose walling incorporating bouldering wall, applied games and edge to multi-use surface.
8. Skillion roof shelter orientated north including concrete base, picnic benches, integrated lighting and drinking fountain.
9. Undulating rubber play surface with an in-ground trampoline, mounding, sunken pods and shade trees.
10. Climbing net challenge in softfall mulch.
11. Compacted quarry fines surface to provide access path to edge of playspace.
12. Outdoor table tennis table to support extension of table tennis academy.
13. Basket swing and monkey bars.
14. New seating to edge of path under shade trees.
15. Landscape buffer to edge of Table Tennis Academy and adjoining properties to support screening and separation. Opportunity to provide additional trees to support provision of natural shade.
16. Improved access path from car park.
17. Provide service access with new gate and review crossover.
18. Open lawn to support informal games and recreation.
19. Install fencing to secure the rear and side of the Table Tennis Academy building



CONCEPT PLAN OPTION B



SURFACES



KEY

1. Multi-use surface with applied paint finish to support a range of different sporting uses e.g. tennis, basketball, netball and handball.
2. New toilet facilities with improved lighting.
3. Four (4) additional parallel car parks along Sullivan Street.
4. Bitumen access loop path with applied line marking (fitness, scooter, access).
5. Existing pedestrian path re-aligned to support existing street trees and improve landscape buffer to road edge.
6. Landscape entry to define Reserve and increase landscape separation from adjacent road. Opportunity to develop entry signage to formalise entrance.
7. Bitumen access path with applied line marking.
8. Lawn mounds to provide level change, form defined edges and space and provide informal seating opportunity.
9. Multi-purpose walling incorporating bouldering wall, applied games and edge to multi-use surface.
10. Skillion roof shelter orientated north including concrete base, BBQ, picnic benches, integrated lighting and drinking fountain.
11. Undulating rubber play surface with an in-ground trampoline, mounding, sunken pods and shade trees.
12. Climbing net challenge in softfall mulch.
13. Compacted quarry fines surface to provide access path to edge of playspace.
14. Outdoor table tennis table to support extension of table tennis academy.
15. Basket swing and monkey bars.
16. New seating to edge of path under shade trees.
17. Landscape buffer to edge of Table Tennis Academy and adjoining properties to support screening and separation. Opportunity to provide additional trees to support provision of natural shade.
18. Improved access path from car park.
19. Provide service access with new gate and review crossover.
20. Open lawn to support informal games and recreation.
21. Install fencing to secure the rear and side of the Table Tennis Academy building.



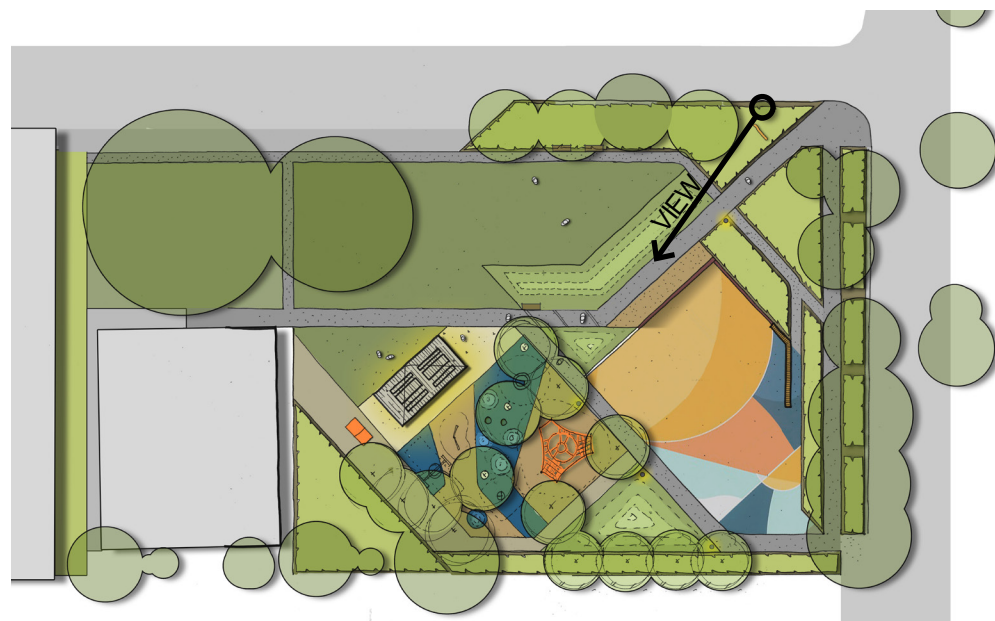
# SYD JONES RESERVE

18SYD / DATE OF ISSUE: 07/08/2018



## KEY

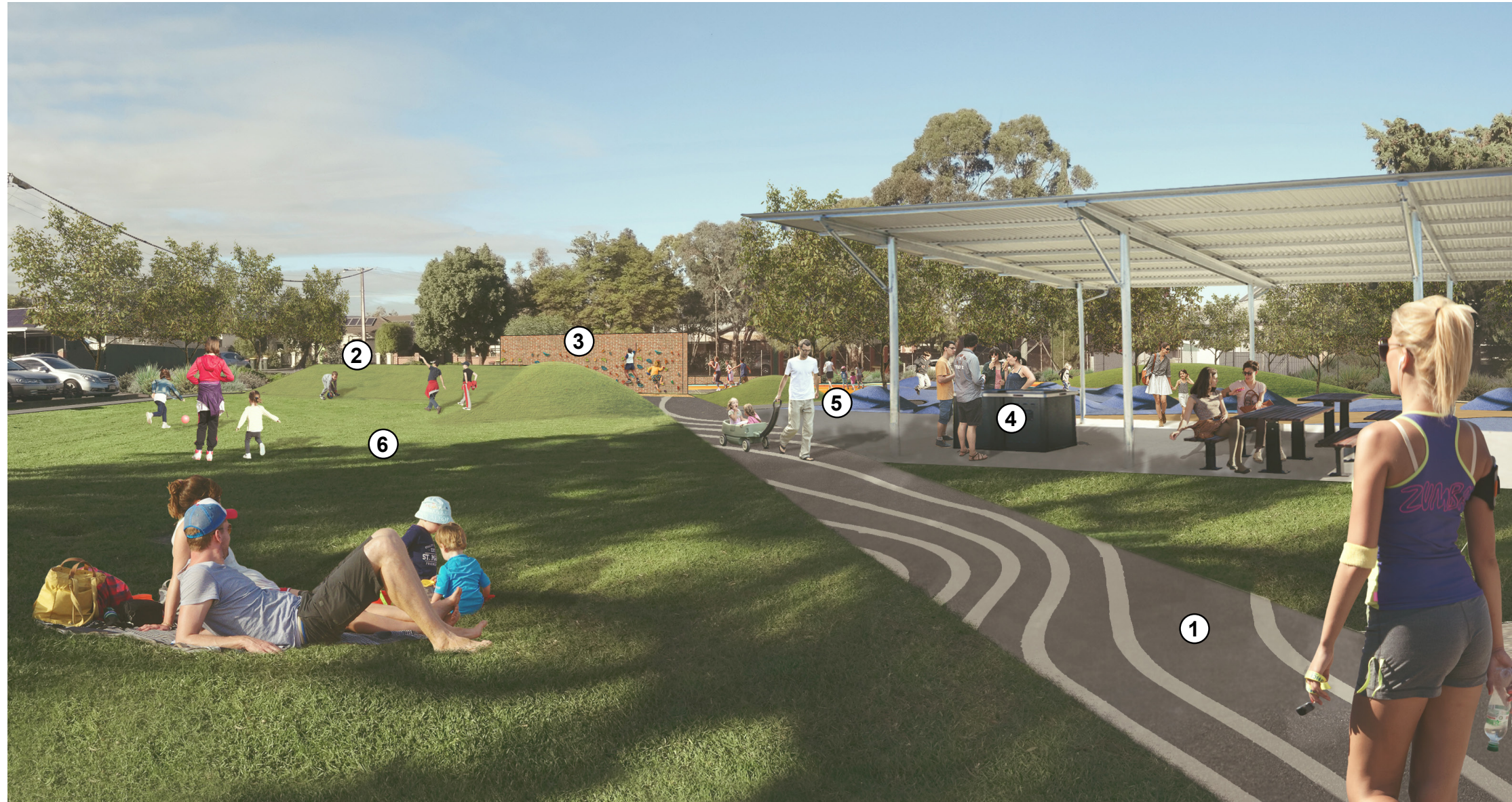
1. Multi-use surface with applied paint finish to support a range of different sporting uses e.g. tennis, basketball, netball and handball.
2. Bitumen access loop path with applied line marking e.g. fitness, scooter and access.
3. Existing pedestrian path re-aligned to support existing street trees and improve landscape buffer to road edge.
4. Landscape entry to define Reserve and increase landscape separation from adjacent road. Opportunity to develop entry signage to formalise entrance.
5. Bitumen access path with applied line marking.
6. Lawn mounds to provide level change, form defined edges and space and provide informal seating opportunity.
7. Multi-purpose walling incorporating bouldering wall, applied games and edge to multi-use surface.
8. Skillion roof shelter orientated north including concrete base, picnic benches, integrated lighting and drinking fountain.
9. Undulating rubber play surface with an in-ground trampoline, mounding, sunken pods and shade trees.
10. Climbing net challenge in sofffall mulch.





# SYD JONES RESERVE

18SYD / DATE OF ISSUE: 07/08/2018



## KEY

1. Bitumen access path with applied line marking.
2. Lawn mounds to provide level change, form defined edges and space and provide informal seating opportunity.
3. Multi-purpose walling incorporating bouldering wall, applied games and edge to multi-use surface.
4. Skillion roof shelter orientated north including concrete base, picnic benches, integrated lighting and drinking fountain.
5. Undulating rubber play surface with an in-ground trampoline, mounding, sunken pods and shade trees.
6. Open lawn to support informal games and recreation.

